



US010076929B1

(12) **United States Patent**  
**Lenz et al.**

(10) **Patent No.:** **US 10,076,929 B1**  
(45) **Date of Patent:** **Sep. 18, 2018**

(54) **BICYCLE HAVING A WIDENED REAR WHEEL**

(56) **References Cited**

(71) Applicants: **Eric D. Lenz**, Greendale, WI (US);  
**Jeffrey R. Gaudynski**, West Allis, WI (US)

(72) Inventors: **Eric D. Lenz**, Greendale, WI (US);  
**Jeffrey R. Gaudynski**, West Allis, WI (US)

(\*) Notice: Subject to any disclaimer, the term of this patent is extended or adjusted under 35 U.S.C. 154(b) by 32 days.

(21) Appl. No.: **15/401,128**

(22) Filed: **Jan. 9, 2017**

U.S. PATENT DOCUMENTS

2,259,022 A *	10/1941	Clark	.....	B60B 11/06
				301/35.627
2,416,862 A *	3/1947	Baker	.....	B60B 11/06
				301/13.1
2,751,959 A *	6/1956	Blomquist	.....	B60B 11/00
				152/158
2,918,328 A *	12/1959	Walls	.....	B60B 11/06
				152/376
3,110,379 A *	11/1963	Baker, III	.....	B62L 5/16
				192/217.3
3,170,549 A *	2/1965	Baker, III	.....	B62L 5/00
				192/217.6
3,532,384 A *	10/1970	Williams, Jr.	.....	B60B 3/16
				301/128
3,913,981 A *	10/1975	Hunden	.....	B60B 11/04
				29/894.32

(Continued)

*Primary Examiner* — Anne Marie M Boehler

*Assistant Examiner* — Michael R Stabley

(74) *Attorney, Agent, or Firm* — Donald J. Ersler

**Related U.S. Application Data**

(60) Provisional application No. 62/279,973, filed on Jan. 18, 2016.

(51) **Int. Cl.**  
**B60B 11/04** (2006.01)  
**B62K 3/02** (2006.01)  
**B62K 19/30** (2006.01)  
**B62M 3/00** (2006.01)  
**B60B 11/06** (2006.01)

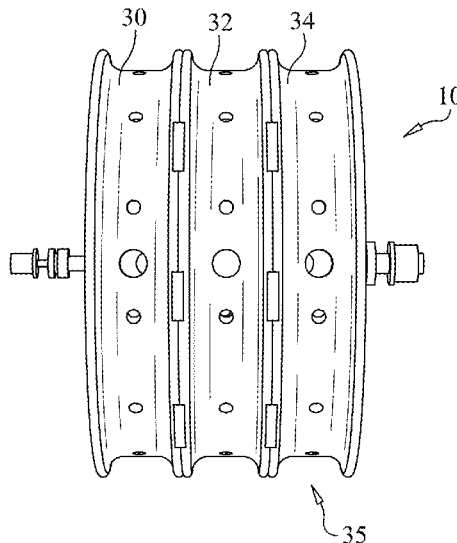
(52) **U.S. Cl.**  
CPC ..... **B60B 11/04** (2013.01); **B60B 11/06** (2013.01); **B62K 3/02** (2013.01); **B62K 19/30** (2013.01); **B62M 3/003** (2013.01); **B60B 2900/3312** (2013.01); **B60Y 2200/13** (2013.01); **B62K 2700/20** (2013.01)

(58) **Field of Classification Search**  
CPC ..... B60B 11/04; B60B 11/06  
See application file for complete search history.

(57) **ABSTRACT**

A bicycle having a widened rear wheel preferably includes an existing bicycle, a double tire rear wheel, a widened crank tube, a widened crank and widened rear fork. The existing bicycle includes a bicycle frame, a front wheel, handlebars, and a seat. The bicycle frame includes a frame unit and a crank set. The frame unit includes a base frame portion, a front fork and a rear fork. The base frame portion includes a top tube, a seat tube, a down tube and a crank tube. The crank tube is replaced with the widened crank tube. The rear fork is replaced with a widened rear fork. A crank of the crank set is replaced with the widened crank. The widened rear wheel preferably includes three bicycle tire rims, a plurality of spokes, two tires and a lengthened rear wheel hub.

**17 Claims, 5 Drawing Sheets**



(56)

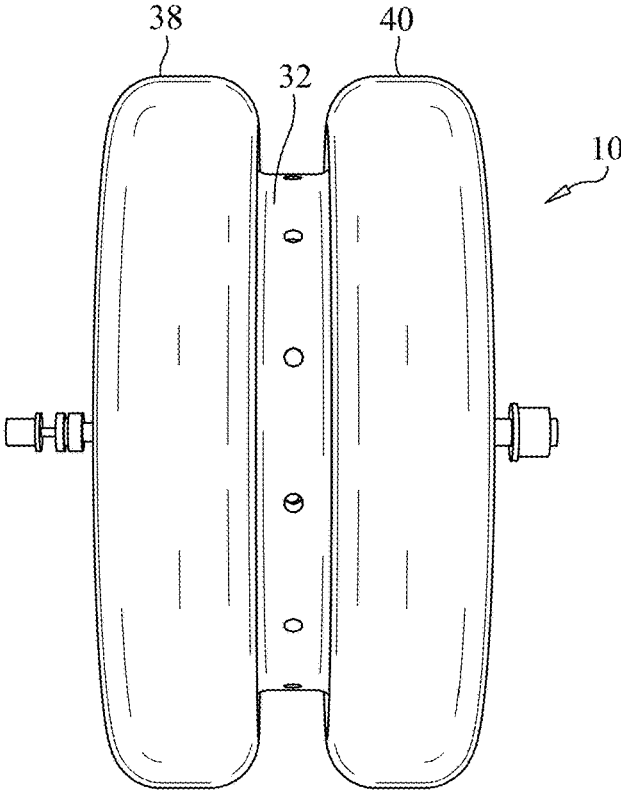
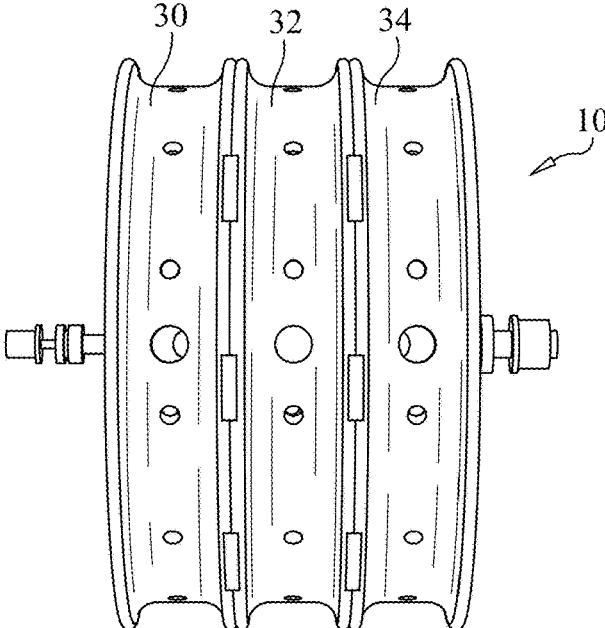
**References Cited**

U.S. PATENT DOCUMENTS

4,070,066	A *	1/1978	Reppert	.....	B60B 11/02	6,022,082	A *	2/2000	O'Brien	.....	B60B 15/263
					301/36.1						152/216
4,124,051	A *	11/1978	Horton	.....	B60B 9/00	6,044,883	A *	4/2000	Noyes	.....	B60C 27/22
					152/155						152/210
4,220,372	A *	9/1980	Johansen	.....	B60B 11/02	6,390,564	B1 *	5/2002	Thomas	.....	B60B 11/00
					301/1						301/13.2
4,765,383	A *	8/1988	Bott	.....	B60B 11/04	6,637,834	B2 *	10/2003	Elkow	.....	B60C 5/22
					137/224						152/415
4,782,876	A *	11/1988	Juhan	.....	B60B 11/04	8,382,135	B1 *	2/2013	Raike, III	.....	B62M 29/00
					152/340.1						152/209.11
4,880,279	A *	11/1989	Flesche	.....	B60B 11/04	8,672,339	B2 *	3/2014	Raike, III	.....	B62M 29/00
					301/114						152/209.11
4,909,537	A	3/1990	Tratner			9,284,009	B2	3/2016	Raike, III et al.		
4,925,250	A *	5/1990	Sorrentino	.....	B60B 11/04	9,744,804	B2 *	8/2017	Pope	.....	B60B 11/06
					301/13.1	2005/0088035	A1 *	4/2005	Bonaldi	.....	B60B 11/04
5,474,144	A	12/1995	Tang								301/36.1
5,788,335	A *	8/1998	O'Brien	.....	B60B 15/26	2010/0194180	A1 *	8/2010	Gibson	.....	B60B 11/04
					301/40.6						301/36.1
5,906,418	A *	5/1999	Cullen	.....	B60B 11/06	2012/0074762	A1 *	3/2012	Pope	.....	B60B 11/04
					301/35.628						301/36.1
6,019,385	A *	2/2000	Kelley	.....	B60T 1/10	2014/0117746	A1 *	5/2014	Pope	.....	B60B 11/06
					280/217						301/35.628

\* cited by examiner





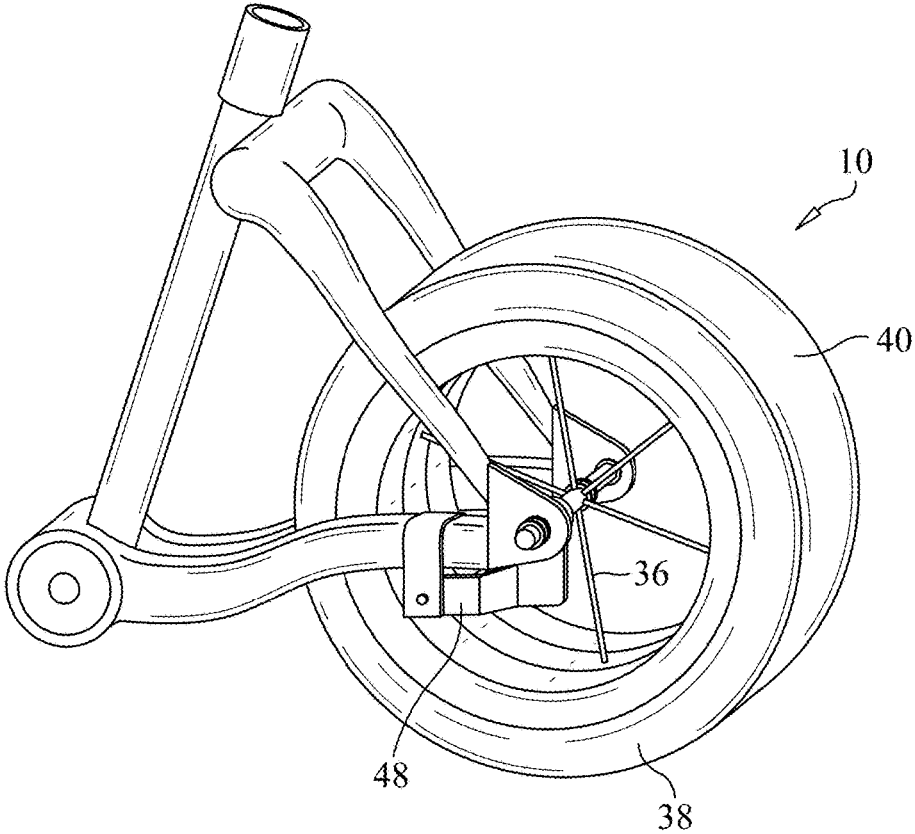


FIG. 5

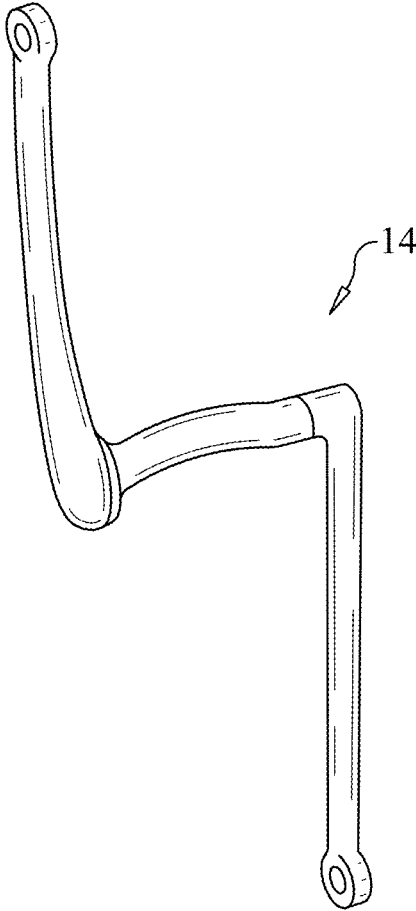


FIG. 6

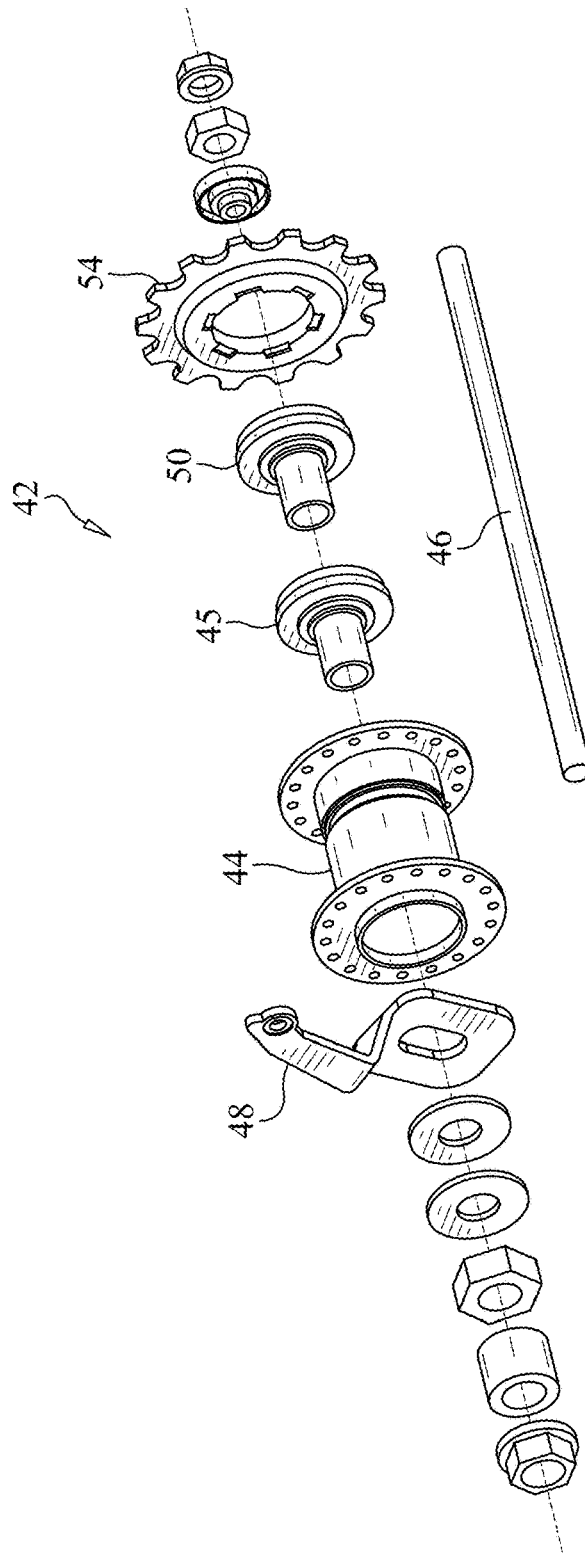


FIG. 7

1

**BICYCLE HAVING A WIDENED REAR WHEEL**

## CROSS-REFERENCES TO RELATED APPLICATIONS

This is a utility patent application taking priority from provisional application No. 62/279,973 filed on Jan. 18, 2016.

## BACKGROUND OF THE INVENTION

## Field of the Invention

The present invention relates generally to cycling and more specifically to a bicycle having a widened rear wheel, which is appropriate for a bicycle rider with poor balance.

## Discussion of the Prior Art

U.S. Pat. No. 4,909,537 to Tratner discloses a universal vehicle for pedaling or the like. U.S. Pat. No. 5,474,144 to Tarnig discloses a twin-wheel motorcar with differential height and speed mechanisms. U.S. Pat. No. 9,284,009 to Raike, III et al. discloses a sand-rideable bicycle with positive traction gear assembly.

Accordingly, there is a clearly felt need in the art for a bicycle having a widened rear wheel, which is appropriate for a bicycle rider with poor balance.

## SUMMARY OF THE INVENTION

The present invention provides a bicycle having a widened rear wheel, which is appropriate for a bicycle rider with poor balance. The bicycle having a widened rear wheel preferably includes an existing bicycle, a double tire rear wheel, a widened crank tube, a widened crank and a widened rear fork. The existing bicycle includes a bicycle frame, a front wheel, handlebars, and a seat. An adult bicycle is shown at <http://www.jimlangley.net/wrench/bicycleparts.html> and is hereby incorporated by reference in its entirety. The bicycle frame includes a frame unit and a crank set. The frame unit includes a base frame portion, a front fork and a rear fork. The base frame portion includes a top tube, a seat tube, a down tube and a crank tube. The crank tube is replaced with the widened crank tube. The rear fork is replaced with a widened rear fork. The widened rear fork preferably includes two rear stays and a seat cross tube or a stay cross tube. Each rear stay includes a chain stay, a seat stay and a rear drop out. One end of the chain stay and the seat stay extend from the rear drop out. Opposing ends of the two chain stays are attached to the widened crank tube. The seat cross tube is attached to an upper portion of the seat tube. Opposing ends of the seat stays are attached to the seat cross tube. Each end of the stay cross tube is retained between the two seat stays. A crank of the crank set is replaced with the widened crank.

The widened rear wheel preferably includes three bicycle tire rims, a plurality of spokes, two tires and a lengthened rear wheel hub. Side perimeters of the three bicycle tire rims are attached to each other with any suitable process, such as welding to form a rear rim wheel. The lengthened rear wheel hub preferably includes an existing hub, a lengthened axle, an offset brake arm and a second drive screw. The existing hub axle is replaced with the lengthened axle. The existing brake arm is replaced with the offset brake arm. The second drive screw is concentrically attached to an end of the

2

existing drive screw with welding or the like. The lengthened rear wheel hub is secured to a center rim of the rear rim wheel with the plurality of spokes. The two tires are secured to the two outer bicycle tire rims. The lengthened axle is secured to the two rear drop outs. The offset brake arm is secured to one of the chain stays. A chain is attached to a driven gear of the existing hub and a drive gear of the crank set. The bicycle having a widened rear wheel does not require a kick stand, but will stand on its own. The widened rear wheel provides resting stability.

Accordingly, it is an object of the present invention to provide a bicycle having a widened rear wheel, which is appropriate for a bicycle rider with poor balance.

These and additional objects, advantages, features and benefits of the present invention will become apparent from the following specification.

## BRIEF DESCRIPTION OF THE DRAWINGS

FIG. 1 is a perspective view of a bicycle having a widened rear wheel in accordance with the present invention.

FIG. 2 is a partially exploded perspective view of a bicycle frame of a bicycle having a widened rear wheel in accordance with the present invention.

FIG. 3 is a side view of a widened rear wheel without tires of a bicycle having a widened rear wheel in accordance with the present invention.

FIG. 4 is a side view of a widened rear wheel with two tires attached thereto of a bicycle having a widened rear wheel in accordance with the present invention.

FIG. 5 is a perspective view of a widened rear wheel of a bicycle having a widened rear wheel in accordance with the present invention.

FIG. 6 is a perspective view of a widened crank of a bicycle having a widened rear wheel in accordance with the present invention.

FIG. 7 is an exploded perspective view of a lengthened rear wheel hub of a bicycle having a widened rear wheel in accordance with the present invention.

## DETAILED DESCRIPTION OF THE PREFERRED EMBODIMENTS

With reference now to the drawings, and particularly to FIG. 1, there is shown a perspective view of a bicycle having a widened rear wheel 1. With reference to FIGS. 2-6, the bicycle having widened rear wheel 1 preferably includes an existing bicycle 100, a widened rear wheel 10, a widened crank tube 12, a widened crank 14 and widened rear fork 16. The existing bicycle 100 includes a bicycle frame 102, a front wheel 104, handlebars 106, and a seat 108. The bicycle frame 102 includes a frame unit 110 and a crank set 112. The crank set 112 includes a crank, bearings, a nut and other hardware. Crank sets are well known in the art and need not be explained in further detail. The frame unit 110 includes a base frame portion 114, a front fork 116 and a rear fork (not shown). The base frame portion 114 includes a top tube 117, a seat tube 118, a down tube 120 and a crank tube (not shown). The crank tube is replaced with the widened crank tube 14. The rear fork is replaced with a widened rear fork 16. The widened rear fork 16 preferably includes two rear stays 18 and a seat cross tube 20 or a stay cross 22. Each rear stay 18 includes a chain stay 24, a seat stay 26 and a rear drop out 28. One end of the chain stay 24 and the seat stay 26 extend from the rear drop out 28. Opposing ends of the two chain stays 24 are attached to the widened crank tube 14. The seat cross tube 20 is attached to an upper portion of the



3

seat tube **118**. Opposing ends of the seat stays **26** are attached to the seat cross tube **20**. Each end of the stay cross tube **22** is retained between the two seat stays **26**. A crank (not shown) of the crank set **112** is replaced with the widened crank **12**.

With reference to FIG. 7, the widened rear wheel **10** preferably includes three bicycle tire rims **30, 32, 34**, a plurality of spokes **36**, two tires **38, 40** and a lengthened rear wheel hub **42**. Side perimeters of the three bicycle tire rims **30, 32, 34** are attached to each other with any suitable process, such as welding to form a rear rim wheel **35**. The lengthened rear wheel hub **42** preferably includes an existing coaster brake hub **44**, a lengthened axle **46**, an offset brake arm **48** and a second drive screw **50**. The existing coaster brake hub **44** with all the internal components is well known in the art and maybe purchased from numerous manufactures, such as Shimano. An existing hub axle (not shown) is replaced with the lengthened axle **46**. The existing brake arm (not shown) is replaced with the offset brake arm **48**. The second drive screw **50** is concentrically attached to an end of the existing drive screw **45** with welding or the like. The lengthened rear wheel hub **42** is secured to the bicycle tire rim **32** of the rear rim wheel **35** with the plurality of spokes **36**. However, the plurality of spokes **36** could be replaced with some other type of hub support device, such as a disc or solid spokes as opposed to wire spokes. The disc would include an outside perimeter attached to the bicycle tire rim **32** and the inside attached to the lengthened rear wheel hub **42**. The two tires **38, 40** are secured to the two outer bicycle tire rims **30, 34** and preferably include inner tubes (not shown). The lengthened axle **46** is secured to the two rear drop outs **28**. The offset brake arm **48** is secured to one of the chain stays **24** with a brake strap (not shown). A chain **52** is attached to a driven gear **54** of the existing coaster brake hub **44** and a drive gear **56** of the crank set **112**. The bicycle having a widened rear wheel **1** does not require a kick stand, but will stand on its own. The widened rear wheel **10** provides resting stability.

While particular embodiments of the invention have been shown and described, it will be obvious to those skilled in the art that changes and modifications may be made without departing from the invention in its broader aspects, and therefore, the aim in the appended claims is to cover all such changes and modifications as fall within the true spirit and scope of the invention.

We claim:

1. A widened rear wheel for a bicycle, comprising:
  - a middle rim;
  - two outside rims are attached to opposing sides of said middle rim to create a rear rim wheel, wherein said two outside rims are capable of retaining a tire;
  - a wheel hub is capable of being rotatably mounted to a bicycle frame of a bicycle; and
  - a hub support device, wherein said wheel hub is retained by said hub support device, said rear rim wheel is secured to said hub support device;
  - said wheel hub is a coaster brake hub; and
  - said wheel hub includes a first drive screw, a second drive screw is attached to end of said first drive screw.
2. The widened rear wheel for a bicycle of claim **1**, further comprising:
  - a bicycle frame includes a frame unit and a crank set, said frame unit includes a base frame portion, a front fork and a widened rear fork, said widened rear fork is sized to receive a width of said wheel hub.

4

3. The widened rear wheel for a bicycle of claim **2** wherein:

said base frame portion includes a widened crank tube, which replaces a normal width crank tube.

4. The widened rear wheel for a bicycle of claim **2** wherein:

said crank set includes a widened crank, which replaces a normal width crank.

5. The widened rear wheel for a bicycle of claim **1** wherein:

said wheel hub includes an offset brake arm.

6. A widened rear wheel for a bicycle, comprising:

a middle rim;

two outside rims are attached to opposing sides of said middle rim, wherein said two outside rims are capable of retaining a tire;

a wheel hub is capable of being rotatably mounted to a bicycle frame of a bicycle; and

a plurality of spokes having one end retained by said wheel hub, an opposing end of said plurality of spokes are secured to substantially a center of said middle rim.

7. The widened rear wheel for a bicycle of claim **6**, further comprising:

a bicycle frame includes a frame unit and a crank set, said frame unit includes a base frame portion, a front fork and a widened rear fork, said widened rear fork is sized to receive a width of said wheel hub.

8. The widened rear wheel for a bicycle of claim **7** wherein:

said base frame portion includes a widened crank tube, which replaces a normal width crank tube.

9. The widened rear wheel for a bicycle of claim **7** wherein:

said crank set includes a widened crank, which replaces a normal width crank.

10. The widened rear wheel for a bicycle of claim **6** wherein:

said wheel hub is a coaster brake hub.

11. The widened rear wheel for a bicycle of claim **10** wherein:

said wheel hub includes an offset brake arm.

12. A widened rear wheel for a bicycle, comprising:

a middle rim;

two outside rims are attached to opposing sides of said middle rim, wherein said two outside rims are capable of retaining a tire;

a wheel hub is capable of being rotatably mounted to a bicycle frame of a bicycle; and

a plurality of spokes having one end retained by said wheel hub, an opposing end of said plurality of spokes are secured to substantially a center of said middle rim, said wheel hub is substantially center relative to a width of said middle rim.

13. The widened rear wheel for a bicycle of claim **12**, further comprising:

a bicycle frame includes a frame unit and a crank set, said frame unit includes a base frame portion, a front fork and a widened rear fork, said widened rear fork is sized to receive a width of said wheel hub.

14. The widened rear wheel for a bicycle of claim **13** wherein:

said base frame portion includes a widened crank tube, which replaces a normal width crank tube.

15. The widened rear wheel for a bicycle of claim **12** wherein:

said crank set includes a widened crank, which replaces a normal width crank.

16. The widened rear wheel for a bicycle of claim 12  
wherein:

said wheel hub is a coaster brake hub.

17. The widened rear wheel for a bicycle of claim 16  
wherein:

said wheel hub includes an offset brake arm.

\* \* \* \* \*