



US00D510059S

(12) **United States Design Patent**
Hickman

(10) **Patent No.:** **US D510,059 S**

(45) **Date of Patent:** **** Sep. 27, 2005**

(54) **BICYCLE FRAME HEAD TUBE**

(76) Inventor: **Gary Wayne Hickman**, 2930 Wind Ck.
Rd., Alpine, CA (US) 91901

(**) Term: **14 Years**

(21) Appl. No.: **29/214,960**

(22) Filed: **Oct. 12, 2004**

Related U.S. Application Data

(63) Continuation of application No. 10/711,875, filed on Oct. 11, 2004.

(51) **LOC (8) Cl.** **12-11**

(52) **U.S. Cl.** **D12/117**

(58) **Field of Search** D12/111, 117;
280/281.1, 274-278, 288.1-288.3, 311,
312

(56) **References Cited**

U.S. PATENT DOCUMENTS

5,368,804 A * 11/1994 Hwang et al. 280/281.1
D419,110 S * 1/2000 Allen et al. D12/111

* cited by examiner

Primary Examiner—Alan P. Douglas

Assistant Examiner—Linda Brooks

(74) *Attorney, Agent, or Firm*—Procopio, Cory, Hargreaves & Savitch LLP

(57) **CLAIM**

The ornamental design for a bicycle frame head tube, as shown.

DESCRIPTION

FIG. 1 is a top perspective view of the bicycle frame head tube showing my new design;

FIG. 2 is a top perspective view of the bicycle frame head tube;

FIG. 3 is a bottom view of the bicycle frame head tube;

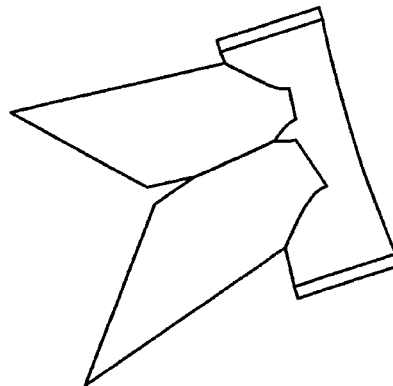
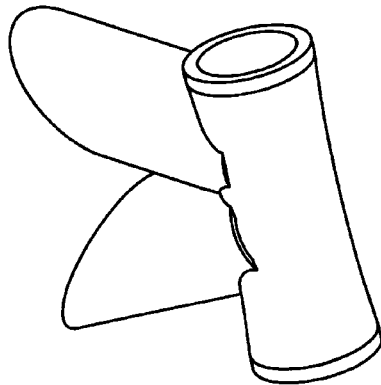
FIG. 4 is a right side view of the bicycle frame head tube;

FIG. 5 is a left side view of the bicycle frame head tube;

FIG. 6 is a front view of the bicycle frame head tube; and,

FIG. 7 is a back view of the bicycle frame head tube showing my new design.

1 Claim, 4 Drawing Sheets



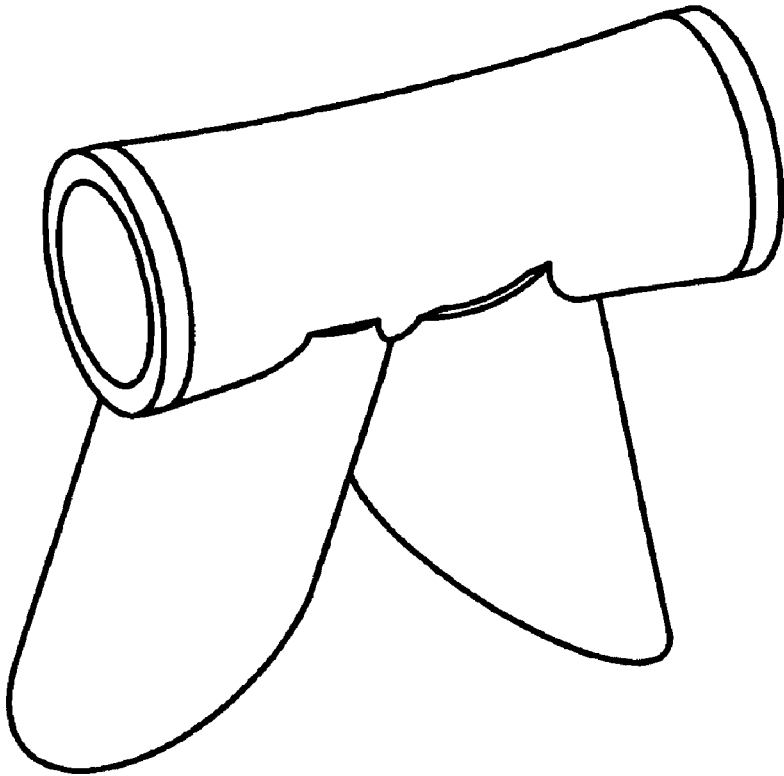


Figure 1

Figure 2

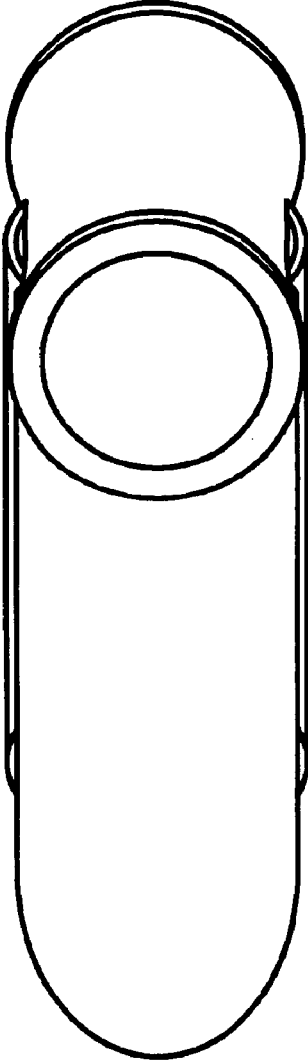
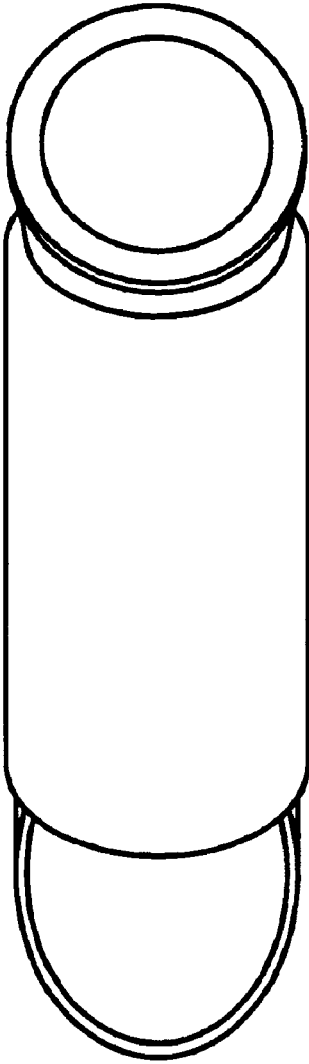


Figure 3



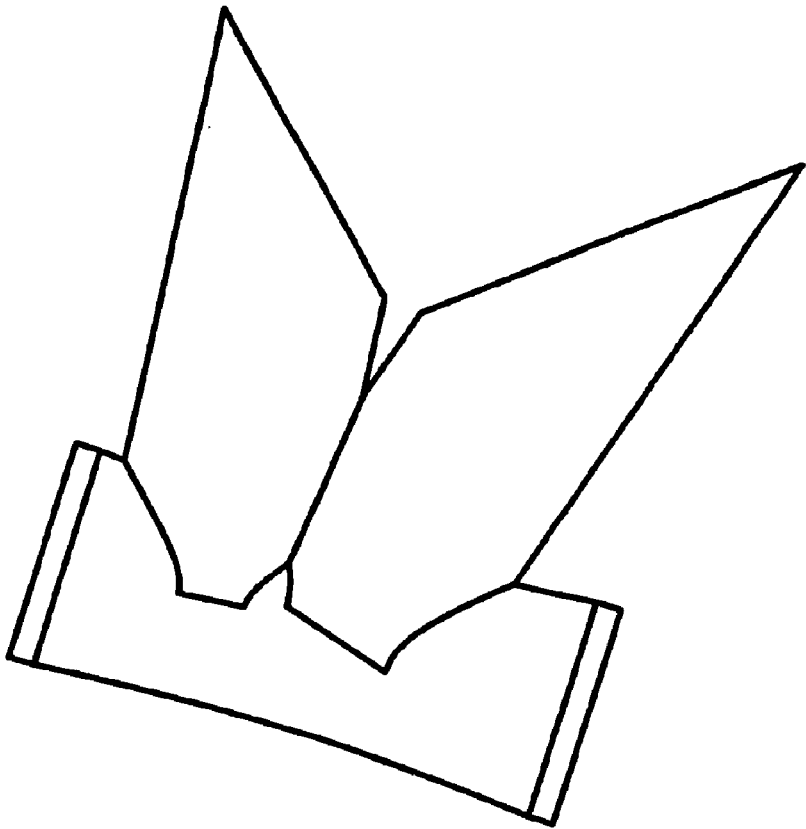


Figure 5

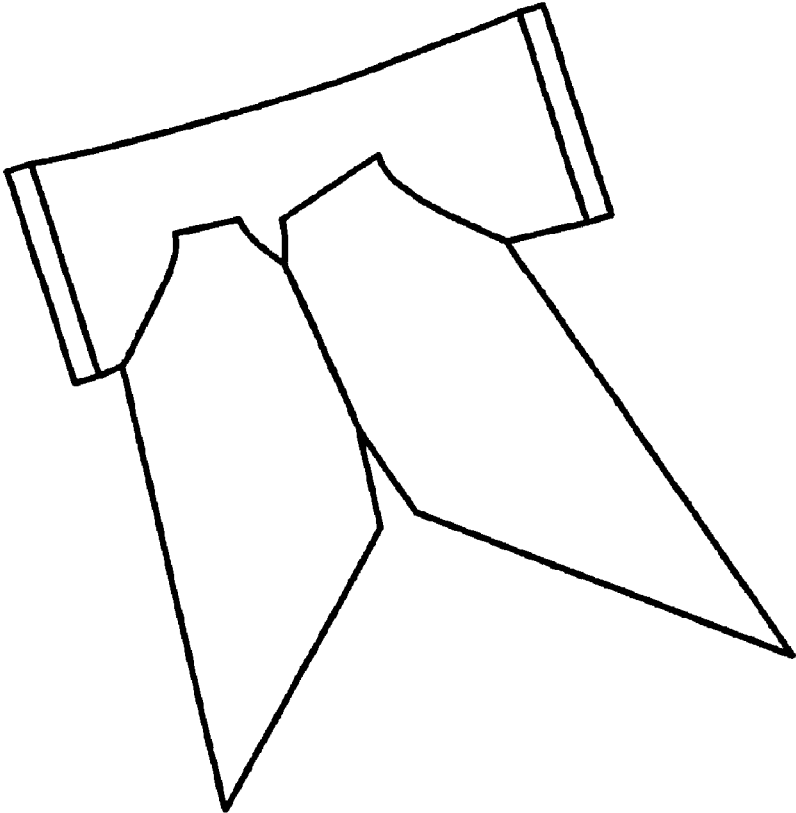


Figure 4

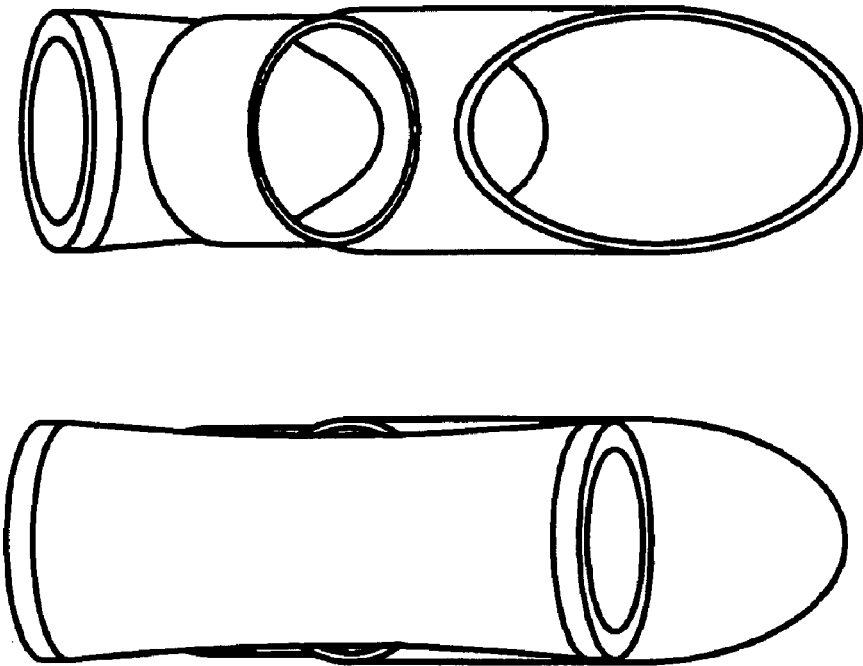


Figure 7

Figure 6