

(12) **United States Patent**
Romero

(10) **Patent No.:** **US 10,365,346 B1**
(45) **Date of Patent:** **Jul. 30, 2019**

(54) **LOW PROFILE MULTI-AXIS STAR SENSING**

(71) Applicant: **Kevin J. Romero**, Claremont, CA (US)

(72) Inventor: **Kevin J. Romero**, Claremont, CA (US)

(73) Assignee: **NORTHROP GRUMMAN SYSTEMS CORPORATION**, Falls Church, VA (US)

(*) Notice: Subject to any disclaimer, the term of this patent is extended or adjusted under 35 U.S.C. 154(b) by 114 days.

(21) Appl. No.: **15/624,462**

(22) Filed: **Jun. 15, 2017**

(51) **Int. Cl.**
G02B 27/00 (2006.01)
G01S 3/786 (2006.01)
G02B 27/28 (2006.01)
G02B 26/08 (2006.01)

(52) **U.S. Cl.**
CPC **G01S 3/7867** (2013.01); **G02B 26/0816** (2013.01); **G02B 27/286** (2013.01)

(58) **Field of Classification Search**
CPC .. G02B 26/0816; G02B 27/286; G01S 3/7867
USPC 250/203.1, 203.3, 203.6
See application file for complete search history.

(56) **References Cited**

U.S. PATENT DOCUMENTS

3,015,249 A * 1/1962 Taylor G01S 3/7867
250/203.6
5,600,123 A * 2/1997 Purrazzella G01C 21/16
250/203.3
6,057,915 A * 5/2000 Squire F41H 13/00
356/139.05

* cited by examiner

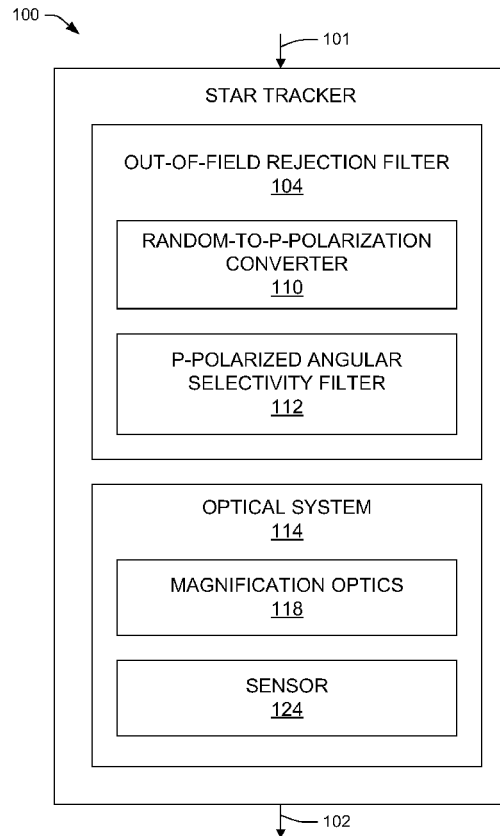
Primary Examiner — Kevin K Pyo

(74) *Attorney, Agent, or Firm* — Tarolli, Sundheim, Covell & Tummino LLP

(57) **ABSTRACT**

A small, ultra-light-weight star tracker for space applications uses an out-of-field rejection filter to reduce the physical size and mass of the star tracker by effectively eliminating the need for a sun shade. The out-of-field rejection filter combines a converter for converting randomly polarized light to p-polarized light with an angular selectivity filter that can reject out-of-field p-polarized light. The underside of the angular selectivity filter can be used to reflect a calibrated light source into the optical path.

20 Claims, 17 Drawing Sheets



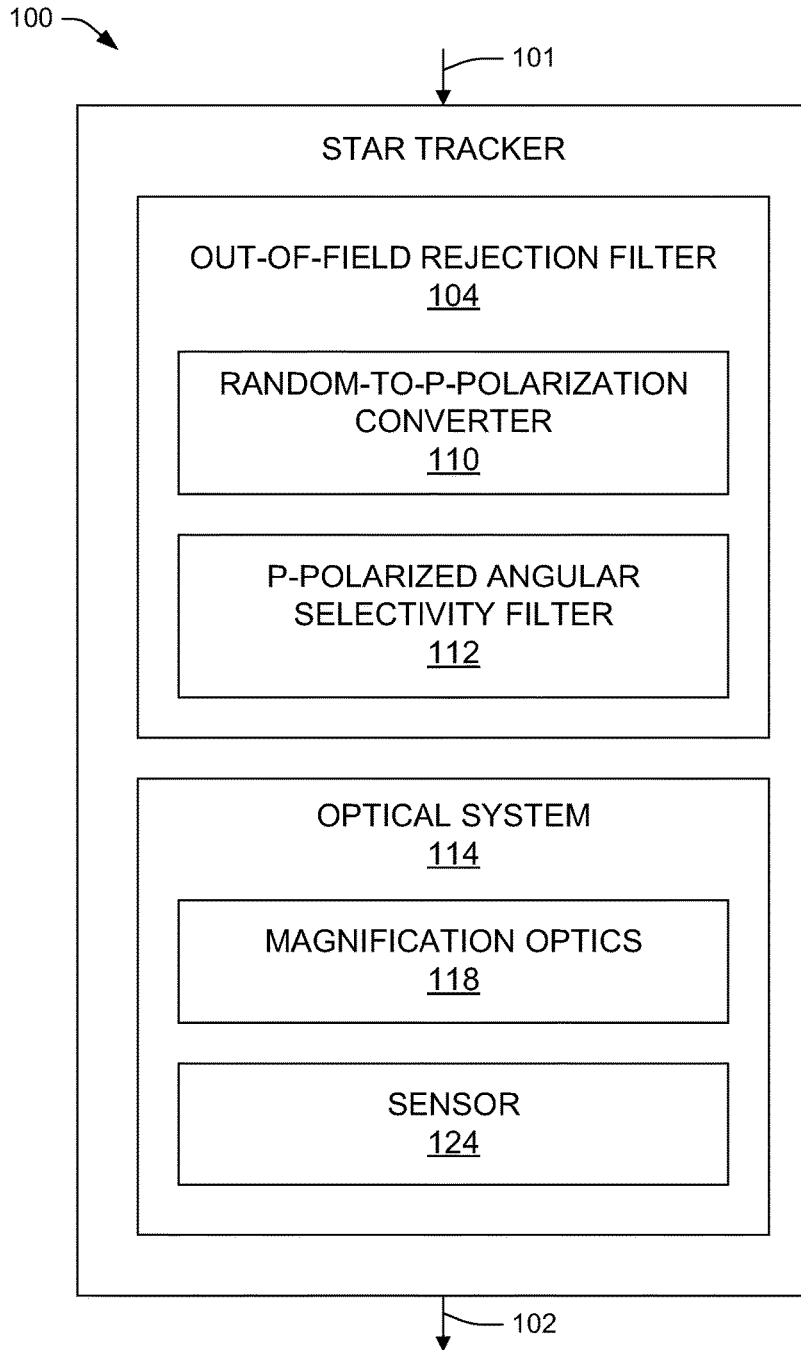


FIG. 1

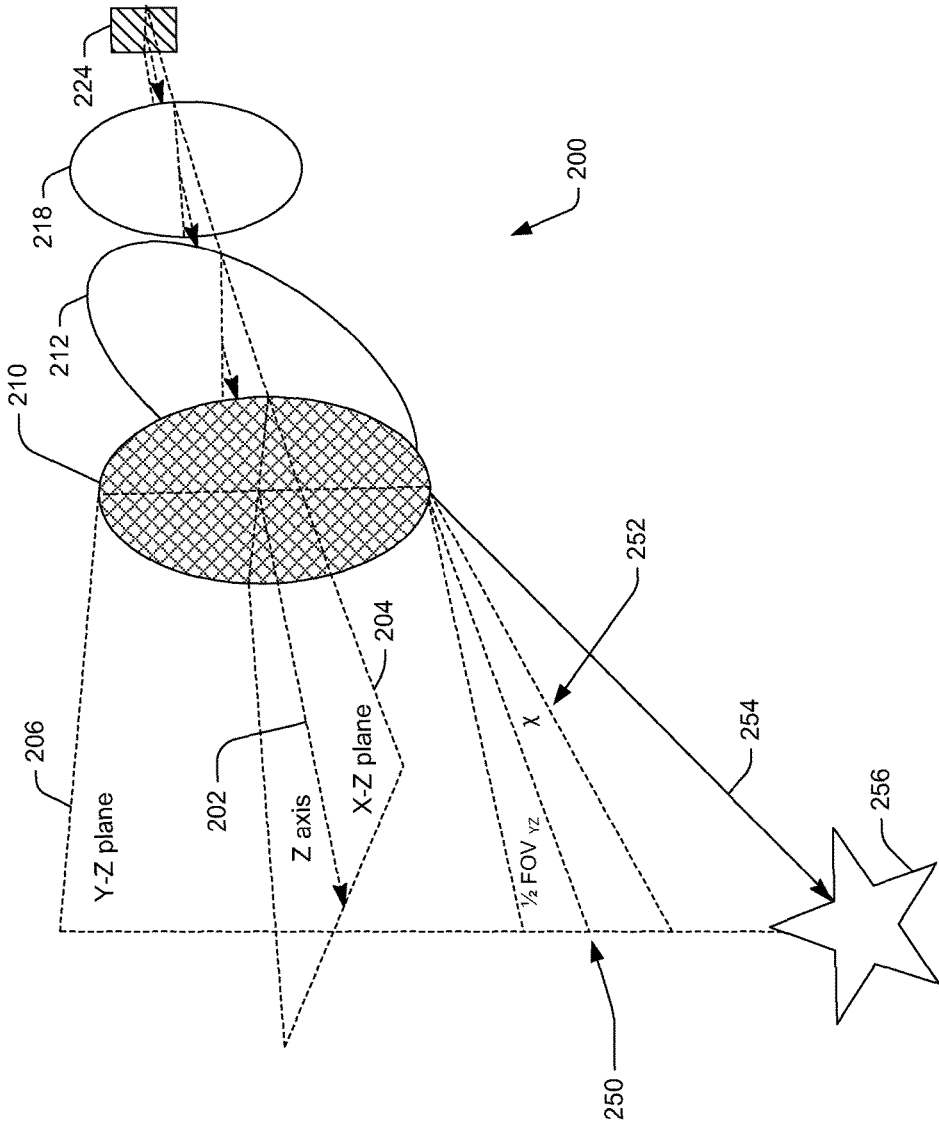


FIG. 2

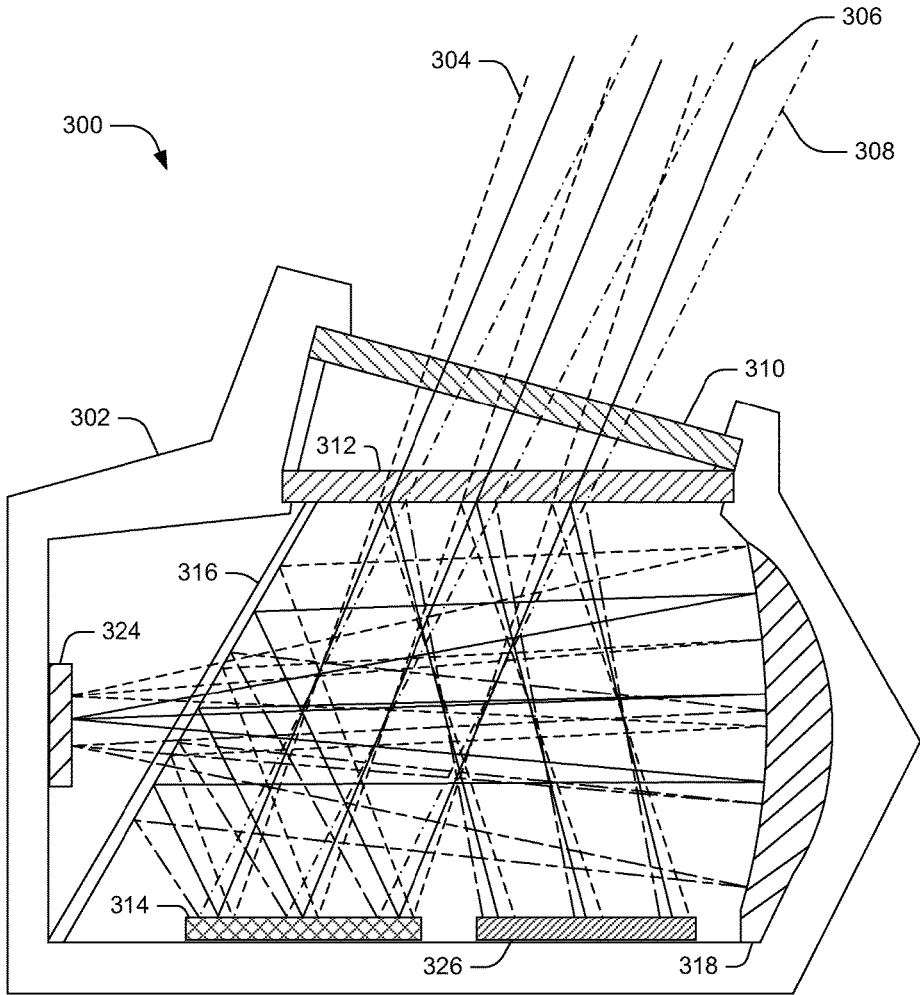


FIG. 3

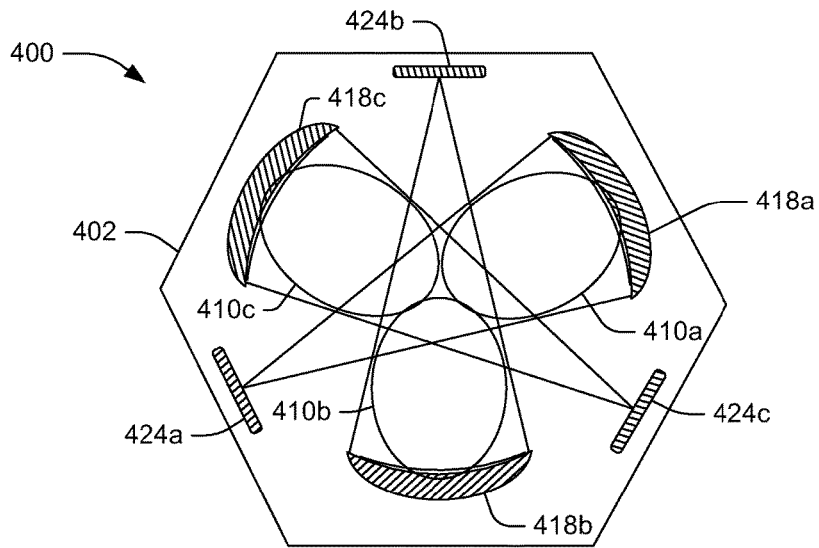


FIG. 4A

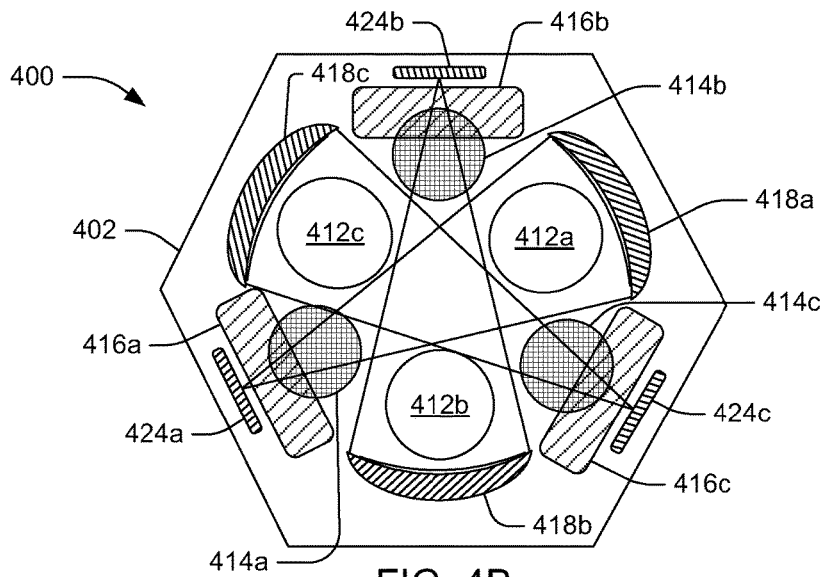


FIG. 4B

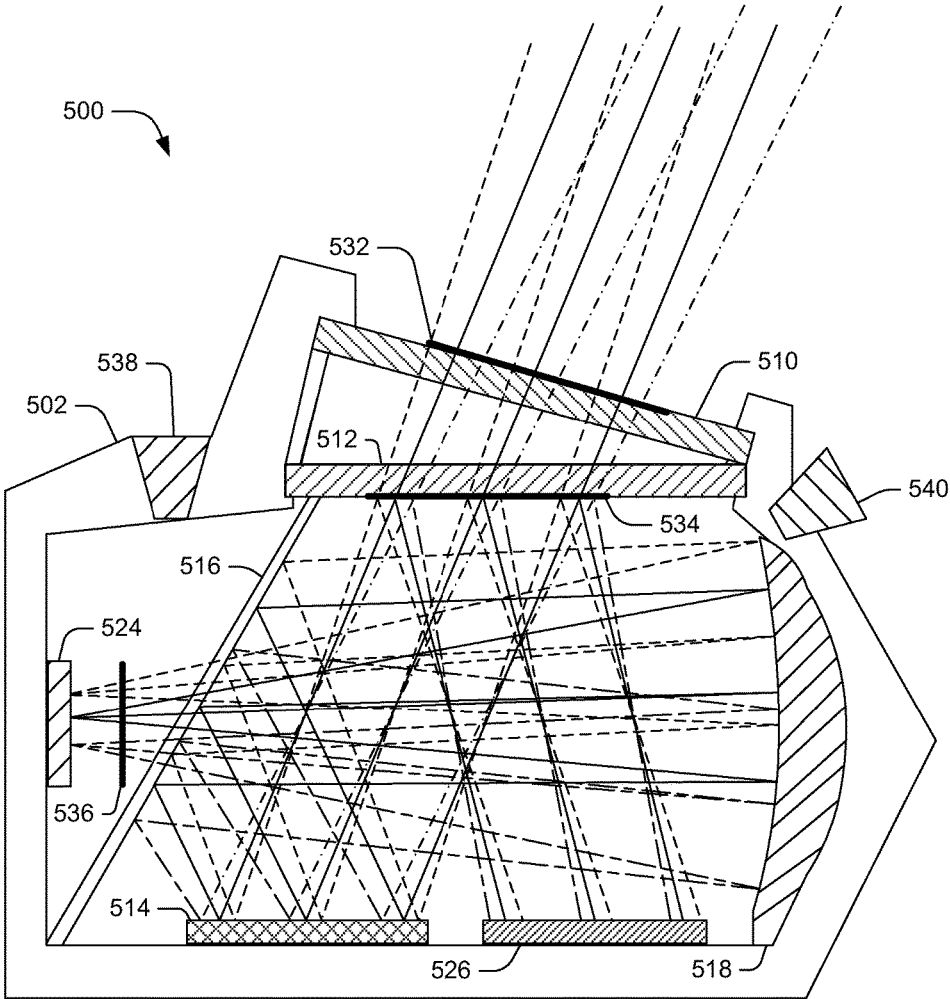


FIG. 5

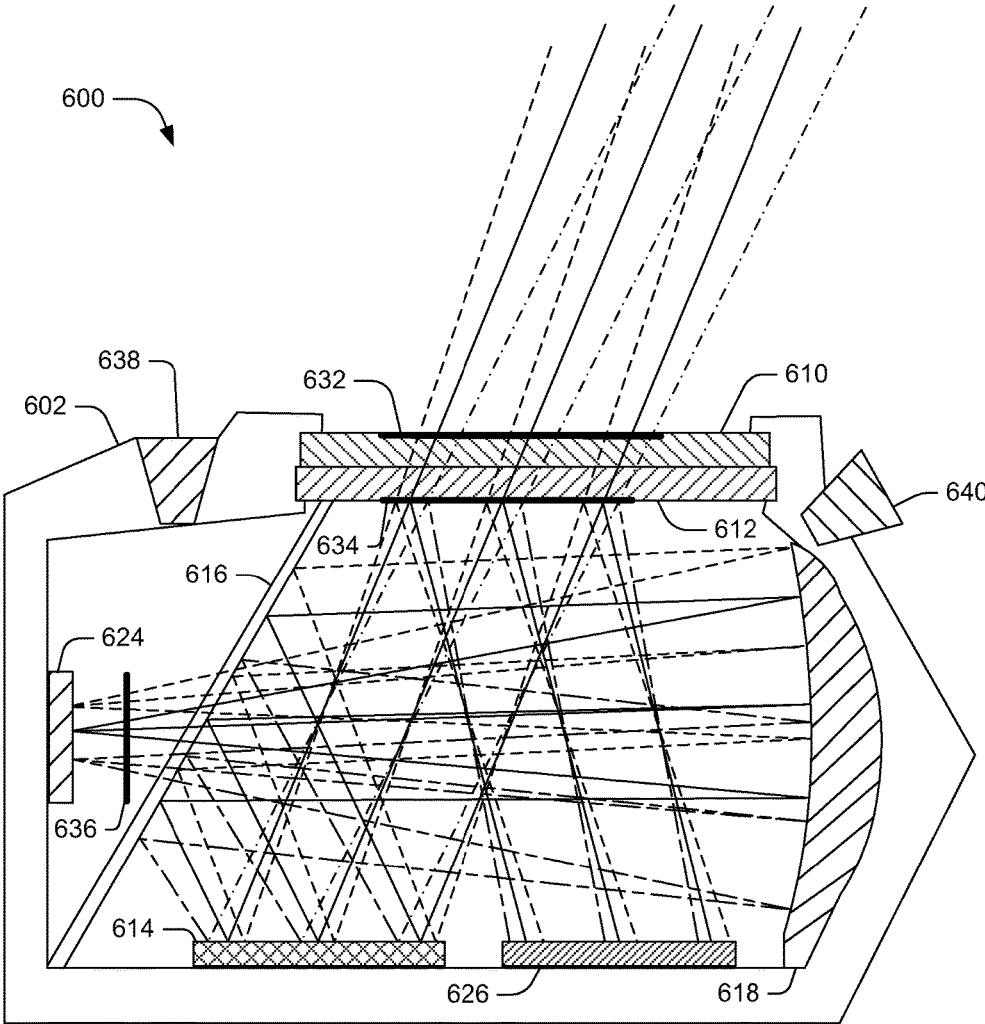


FIG. 6

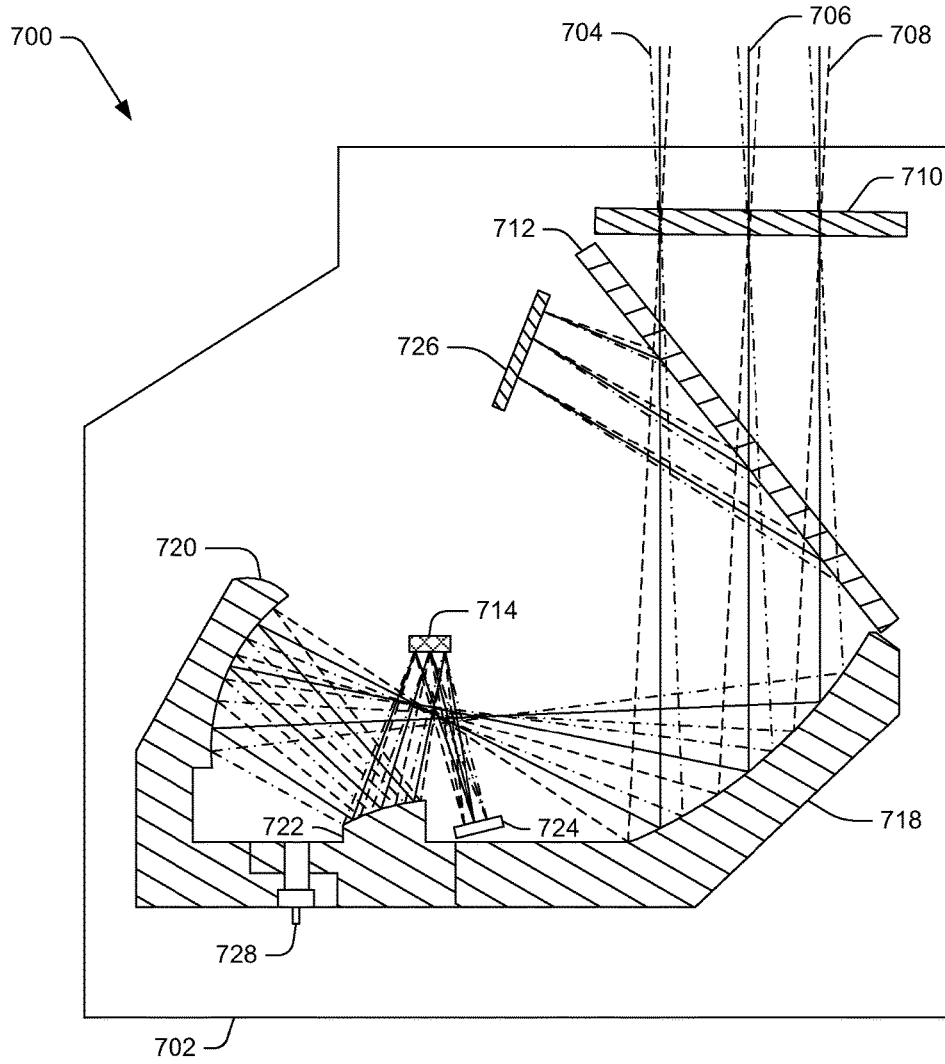


FIG. 7

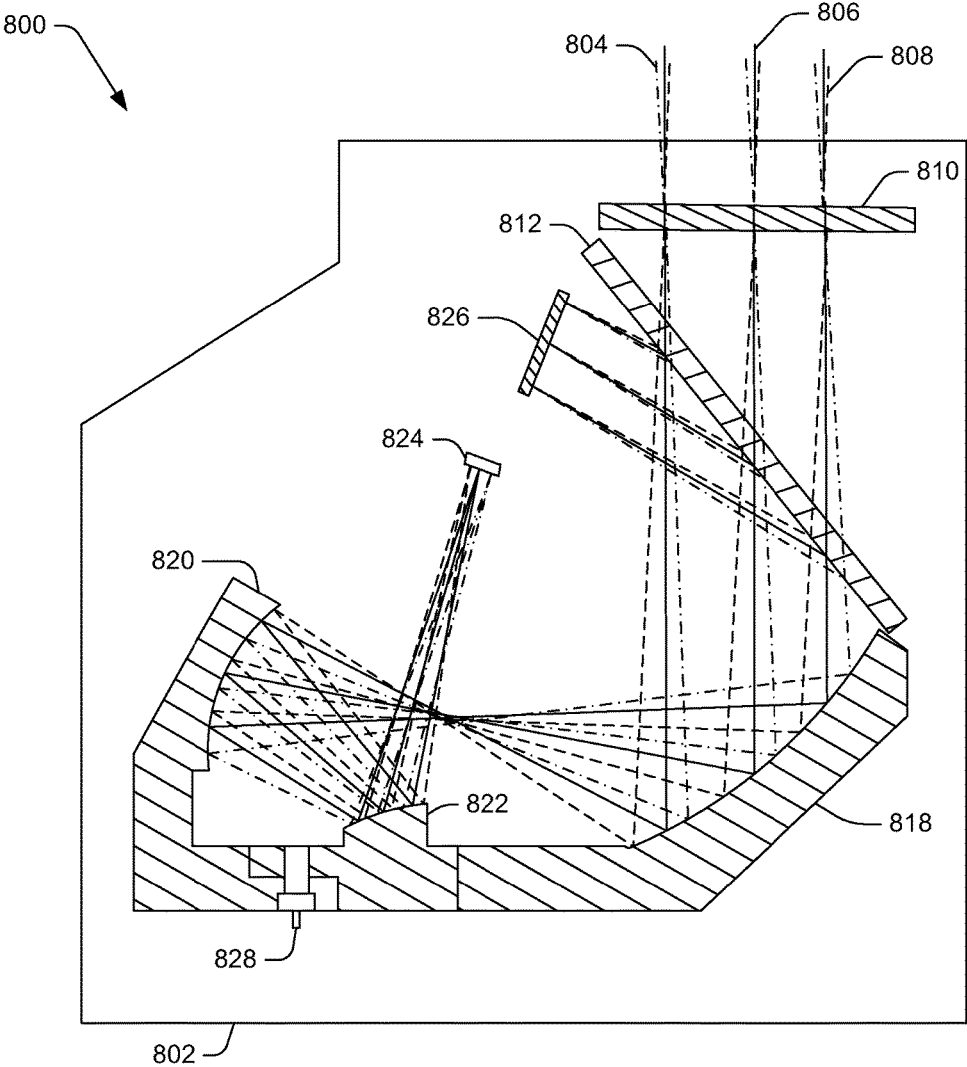


FIG. 8

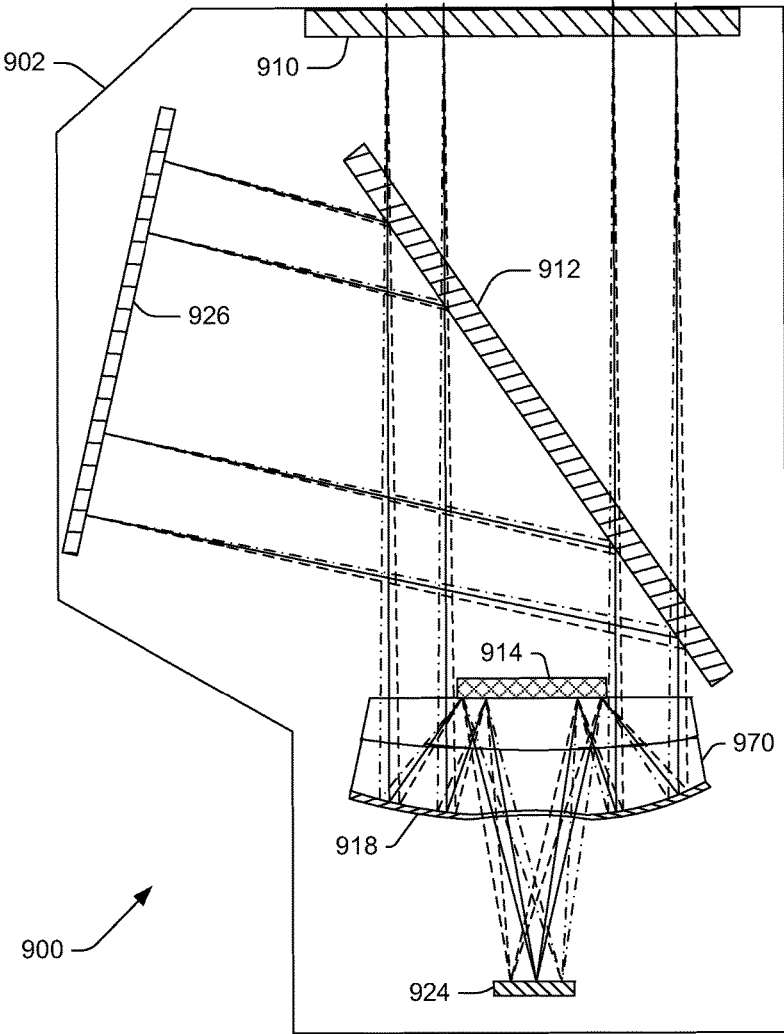


FIG. 9

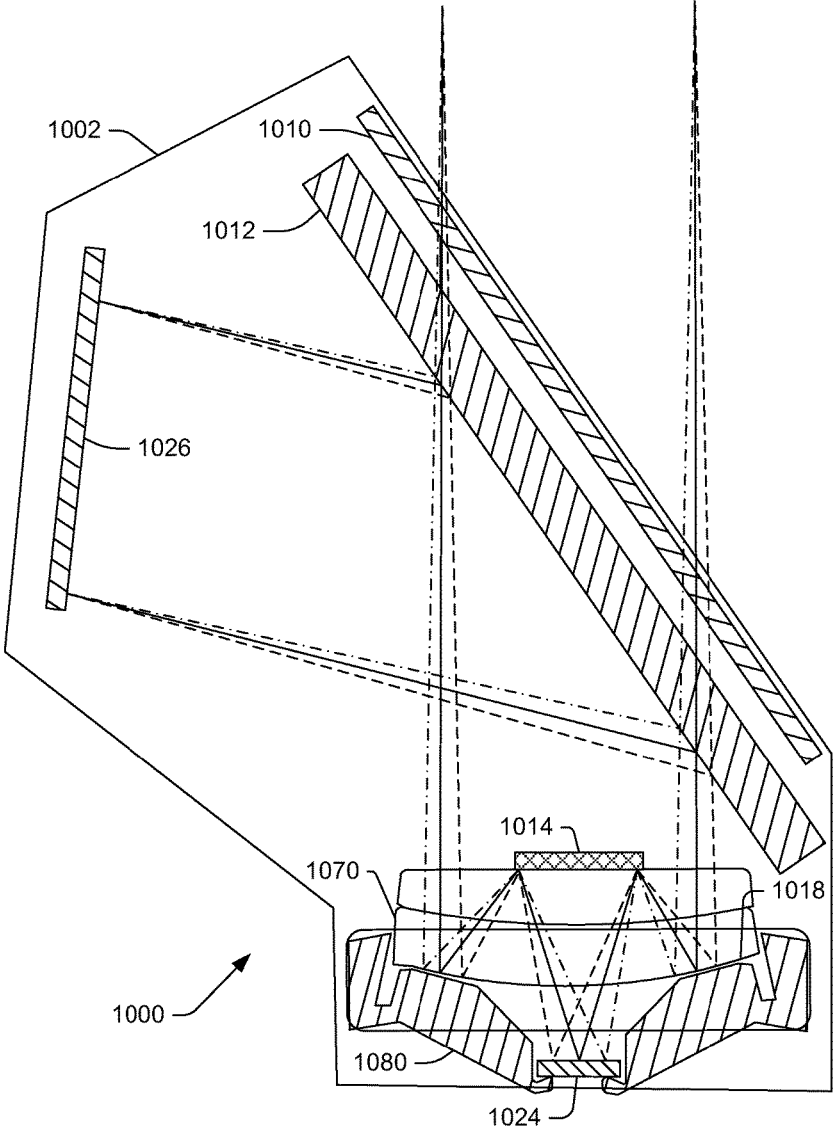


FIG. 10

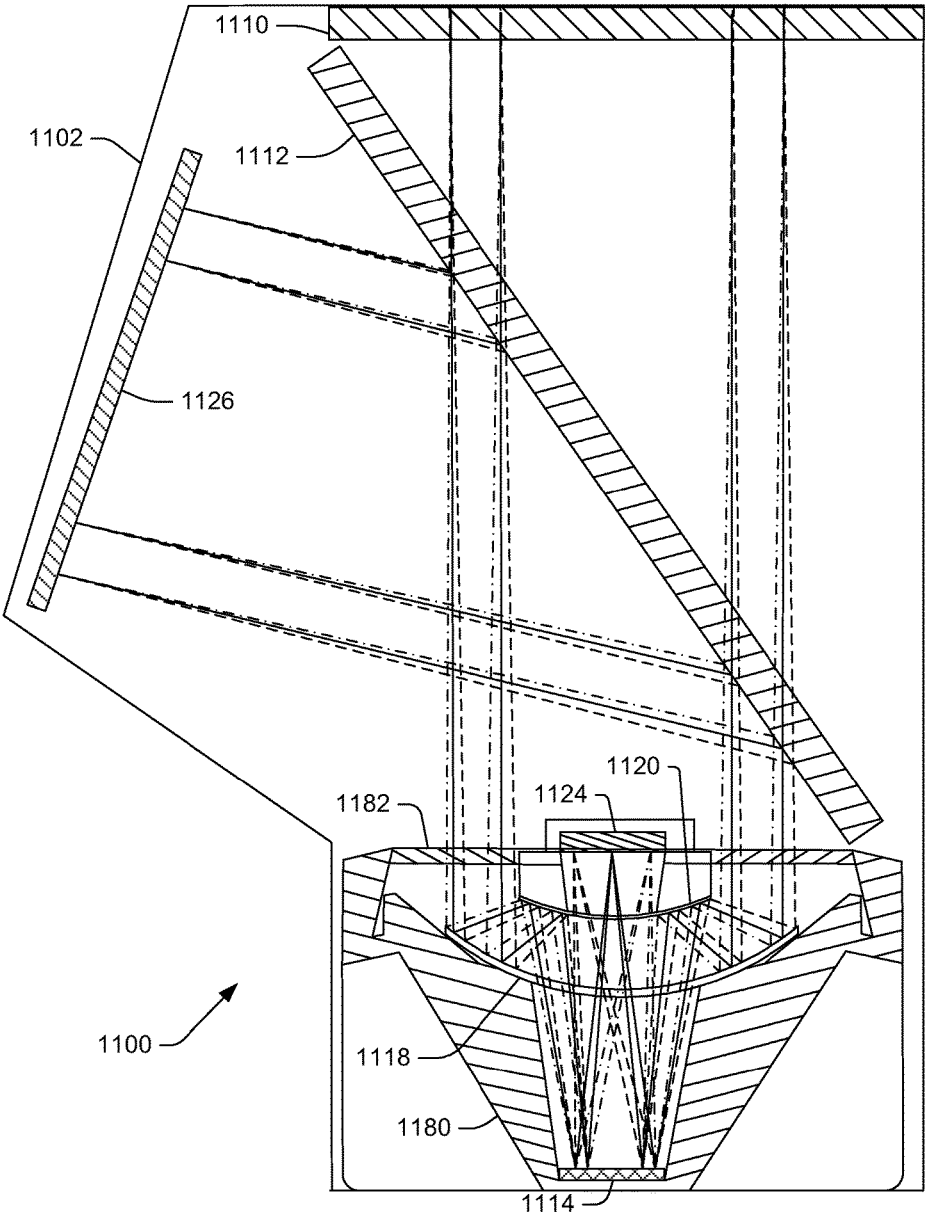


FIG. 11

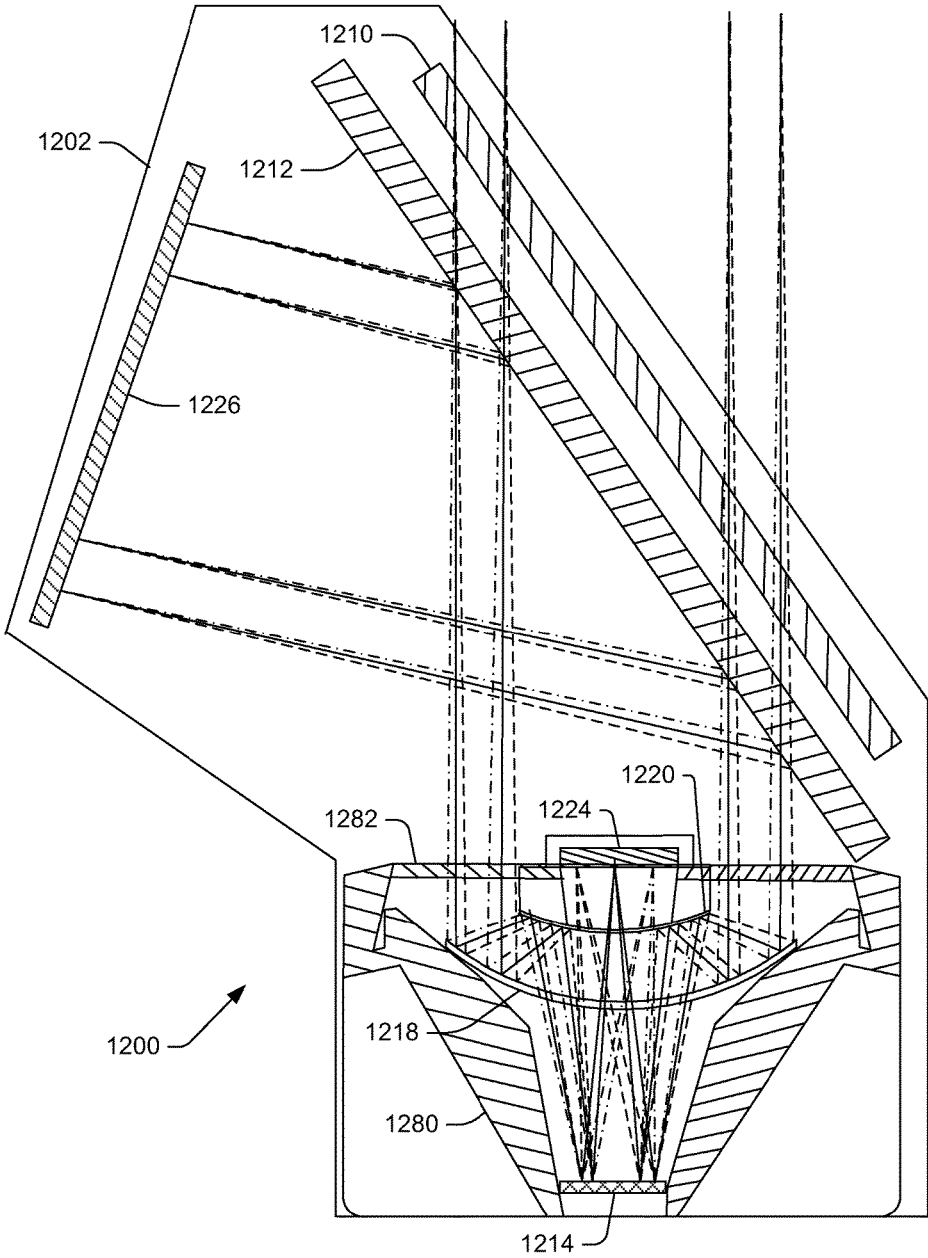


FIG. 12

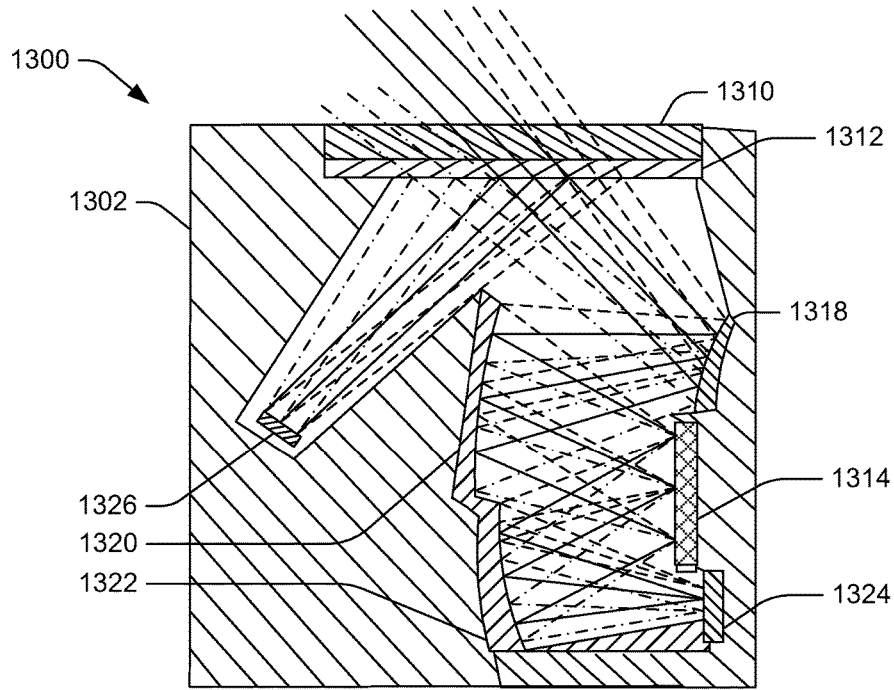


FIG. 13A

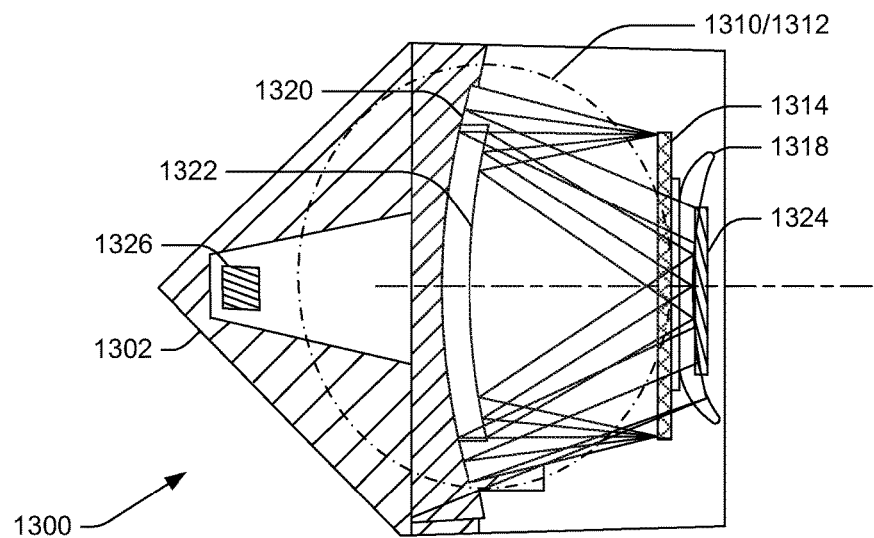


FIG. 13B

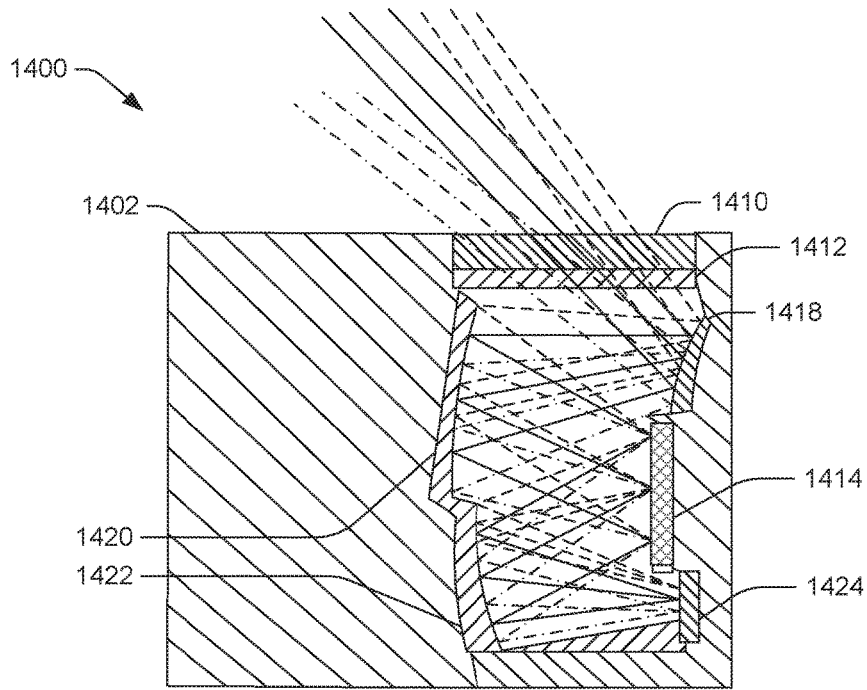


FIG. 14A

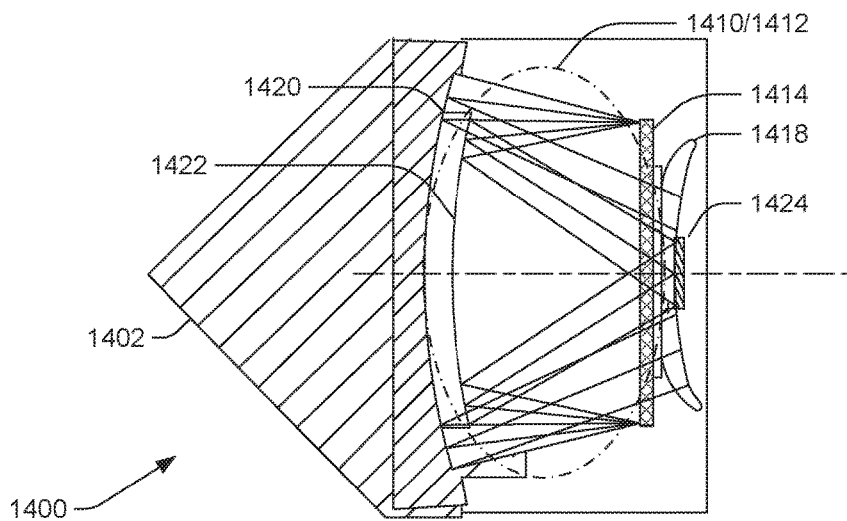


FIG. 14B

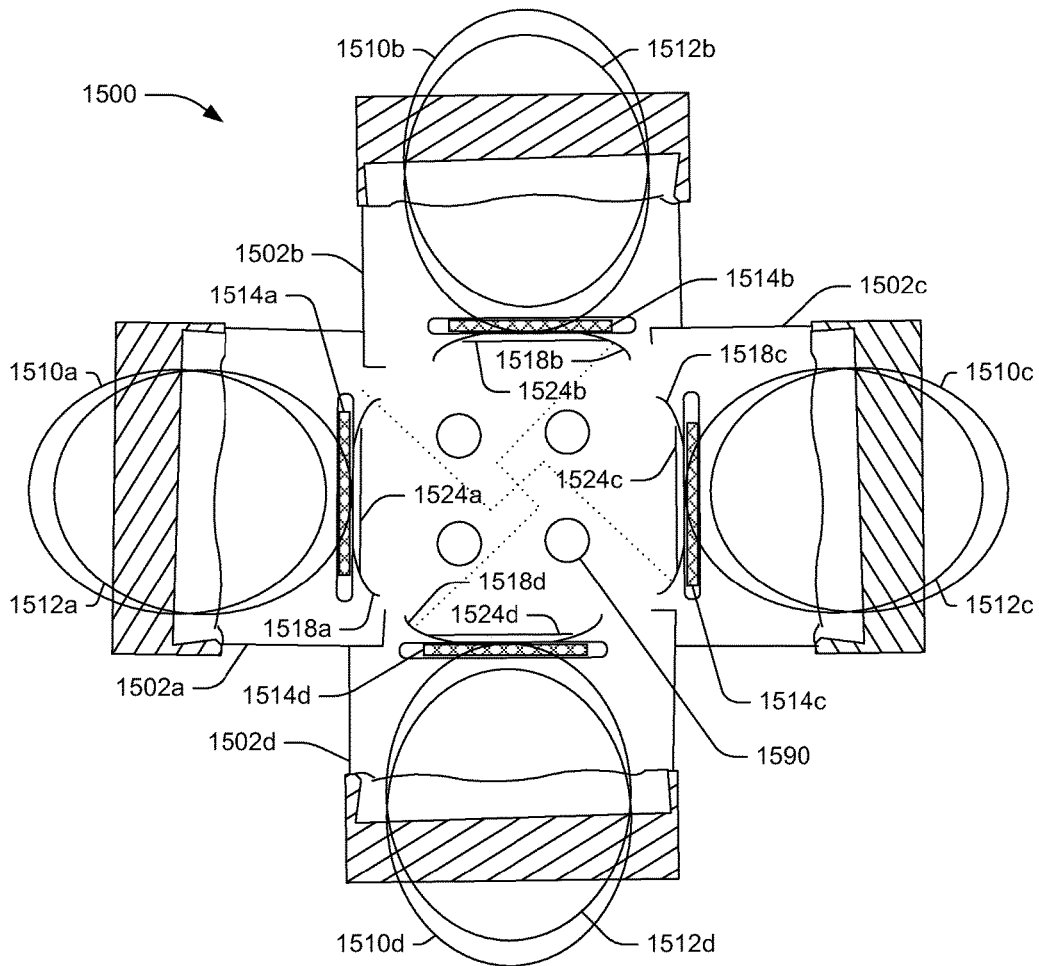


FIG. 15A

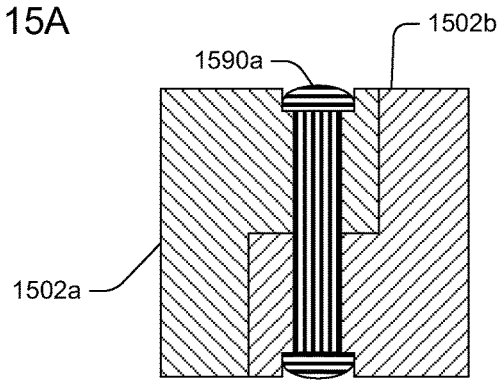


FIG. 15B

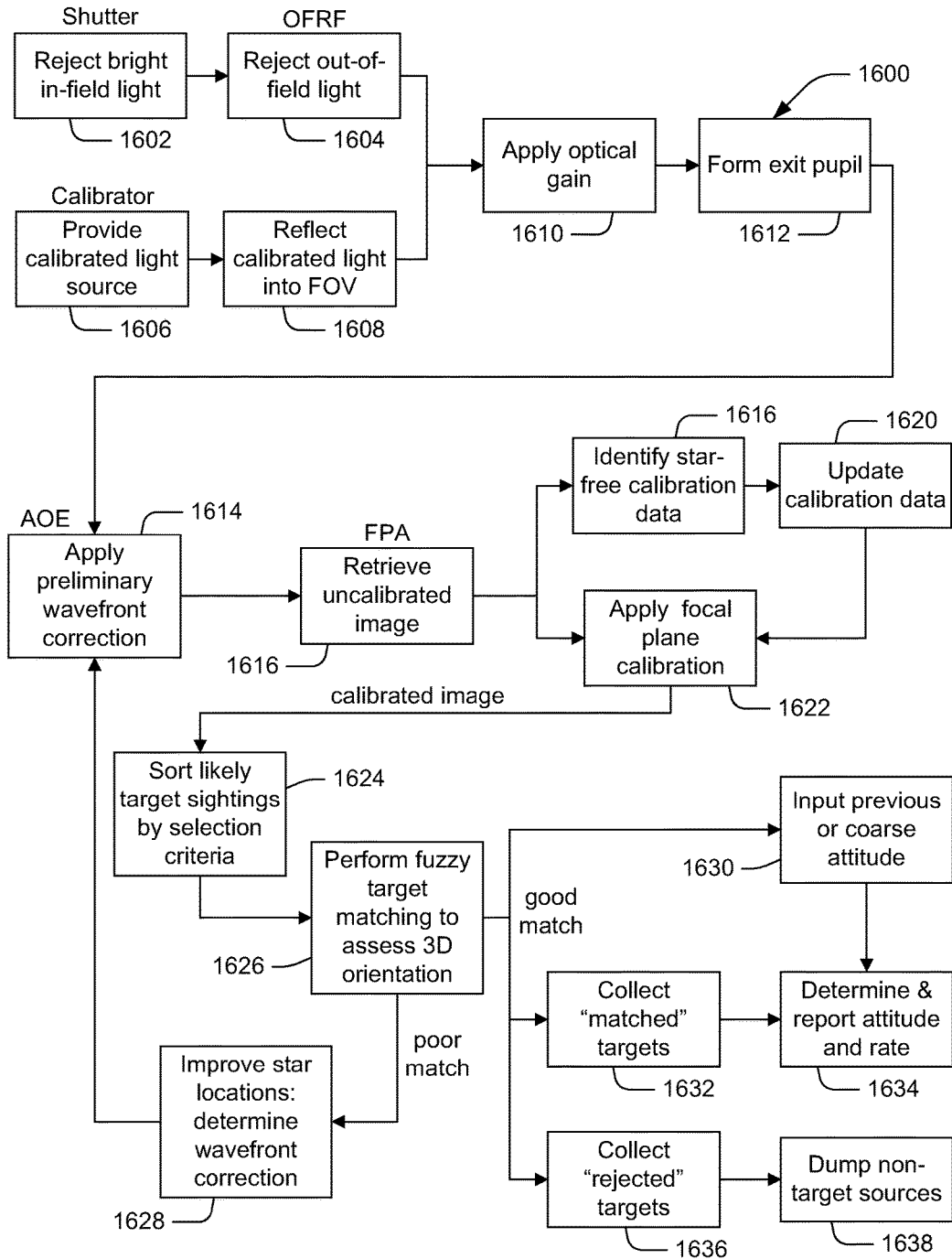


FIG. 16

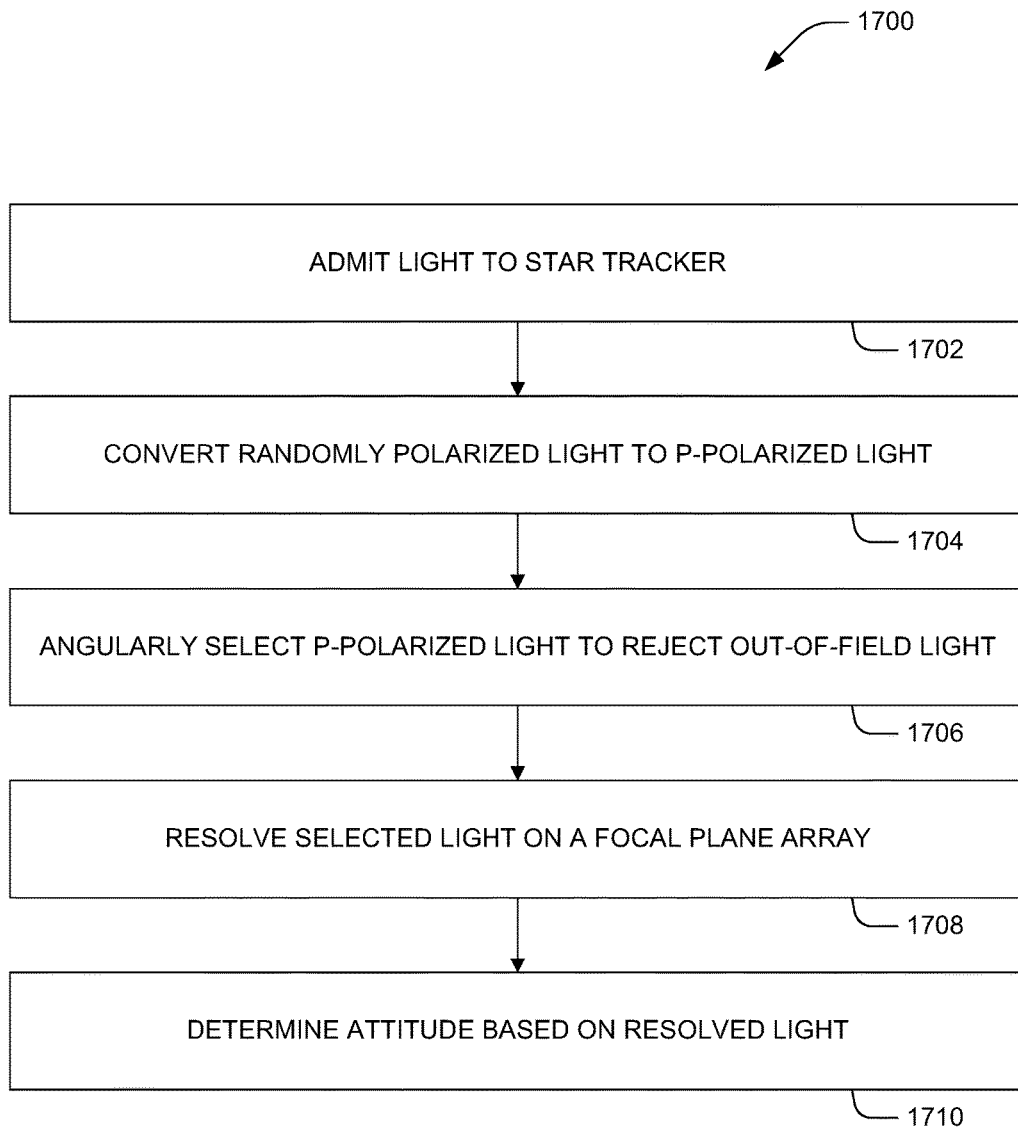


FIG. 17

LOW PROFILE MULTI-AXIS STAR SENSING

TECHNICAL FIELD

The present invention relates to systems and methods for sensing stars. Particularly, the present invention relates to star trackers as may be used for navigation in satellites and other craft.

BACKGROUND

A star tracker determines the bearing and elevation of one or more known stars. Information from two or more known stars can yield the position of the star tracker and thus can provide position data to an associated navigation system as may be used, for example, on maritime craft, aircraft, spacecraft, or satellites. Many star trackers comprise telescopes that make use of sun shades to shade the star tracker field-of-view from stray light coming from the Sun, Earth, or Moon, to provide a view of needed reference stars that is unadulterated by out-of-field radiation.

SUMMARY

In one example, there is provided a star tracker having an out-of-field rejection filter (OFRF). The OFRF can include a converter to convert randomly polarized light to p-polarized light, and an angular selectivity layer to select in-field p-polarized light and reject out-of-field p-polarized light. The star tracker can therefore be sunshadeless, or can have only a very small sun shade. The star tracker can include telescopic optics and a focal plane array to resolve the selected light. The star tracker can further include an adaptive optical element (AOE) arranged to reduce centroiding error by adjusting focus of, or reducing aberrations in, selected light. An interior side of the angular selectivity layer can be reflective to s-polarized light and can be arranged to reflect light from a calibration source within the star tracker to be resolved on the focal plane array. The telescopic optics can be diamond-turned optics.

In another example, there is provided a multi-axis star tracker package having a base, at least three star trackers mounted to the base, each having a boresight. Each star tracker can have an out-of-field rejection filter made of a converter to convert randomly polarized light to p-polarized light and an angular selectivity layer to select in-field p-polarized light and reject out-of-field p-polarized light; telescopic optics; and a focal plane array to resolve the selected light. The boresights of the star trackers can be arranged such that the star trackers have substantially non-overlapping fields of view.

In yet another example, there is provided a method of star tracking including admitting light to a star tracker having an attitude; converting randomly polarized light in the admitted light to p-polarized light; angularly selecting the p-polarized light to reject out-of-field light; resolving the selected light on a focal plane array; and determining the attitude of the star tracker based on the resolved light.

BRIEF DESCRIPTION OF THE DRAWINGS

FIG. 1 is a system diagram of a star tracker.

FIG. 2 is a light vector diagram of star tracker out-of-field rejection.

FIG. 3 is a cross-sectional diagram of an example star tracker.

FIGS. 4A and 4B are overhead cross-sections of a three-star tracker package arrangement.

FIG. 5 is a cross-sectional diagram of an example star tracker.

FIG. 6 is a cross-sectional diagram of an example star tracker.

FIG. 7 is a cross-sectional diagram of an example star tracker.

FIG. 8 is a cross-sectional diagram of an example star tracker.

FIG. 9 is a cross-sectional diagram of an example star tracker.

FIG. 10 is a cross-sectional diagram of an example star tracker.

FIG. 11 is a cross-sectional diagram of an example star tracker.

FIG. 12 is a cross-sectional diagram of an example star tracker.

FIGS. 13A and 13B are cross-sectional diagrams of an example star tracker.

FIGS. 14A and 14B are cross-sectional diagrams of an example star tracker.

FIG. 15A is an overhead cross-section of an example four-star tracker package arrangement, while FIG. 15B is a side-view cross-section of an example connection between star trackers in the package.

FIG. 16 is a flow chart of an example method of star tracking.

FIG. 17 is a flow chart of an example method of star tracking.

DETAILED DESCRIPTION

“Operational window” describes the set of star tracker orientations for which the star tracker and its associated systems can successfully determine an attitude from acquired visuals of stars. The utility of a star tracker is enhanced by a wider operational window, but operational windows are narrowed particularly by stray bright light. A major source of such stray light can be, for example, the Sun, Earth, or Moon. A star tracker can stop functioning when it is pointed at or near the Sun, for example. “Out-of-field rejection” describes the reduction of unwanted stray light from entering the optical path of a star tracker.

Star trackers can employ bulky sun shades for out-of-field rejection. Such sun shades are commonly cone-shaped and are often required to be very long in order to provide adequate stray-light rejection. For example, a sun shade for an 8.75-centimeter aperture star tracker with a 9° field of view and a 5° exclusion angle (measured relative the maximum field angle) can be about a meter in length. The standard length L of a sun shade is dependent on aperture D₀, field of view 2Ω, and exclusion angle χ, as described by the sun shade length equation

$$L = D_0 / (\tan(\Omega + \chi) - \tan(\Omega)); \chi > \Omega$$

In addition to adding weight and bulk to the craft employing the star tracker, and thus to the cost of the craft’s launch or other transport, a long sun shade can also store mechanical energy, which can contribute to undesirable jitter in the system, impacting the “first mode” of the star tracker and that of other jitter sensitive elements on the system.

The present disclosure introduces an out-of-field rejection filter (OFRF) to perform the function of out-of-field rejection and thus eliminate or substantially reduce the need for, and/or the size of, sun shades in a star tracker. The OFRF can be tilted through an angle ft, so that rays along the boresight

of the star tracker are incident at the effective Brewster's angle, θ of the OFRF. When the OFRF is oriented in this way, the minimum total length of the OFRF housing above a star tracker entrance aperture is given by the sun shade length equation above, with the baffle exclusion angle replaced by $\chi_{\text{ofrf}} = \beta - \Omega$. The actual exclusion angle is determined by the design of the angular selectivity filter, and the allowable attenuation as a function of field angle for the star-tracker based on performance modeling.

In some examples, the star trackers employing the OFRFs of the present disclosure have housings less than 10% of the standard length of a traditional sun shade, i.e., as given by the sun shade length equation above. The size of the housing is dependent on the effective Brewster angle β of the angular selectivity filter and the field of view of the telescope while the length of the traditional sun shade depends on field of view and the exclusion angle. For angular selectivity filters made from optical materials whose effective index of refraction ranges from 1.43 to 2.35, the OFRF housing can be between 4% and 7% the size of a traditional shade using typical exclusion angle values (of about 5.7 degrees) and FOVs ranging from 1 to 8 degrees.

The OFRF can act as a scattering surface, and so it is possible to extend the housing to form a short sun shade in front of the device to improve performance by reducing the total amount of scattered p-polarized light that might enter the tracker. The length of this shade is determined by the allowed exclusion angle which is driven by the mission profile for which the star tracker is used and allowable amount of scattered light. The amount of light scattered into the star tracker is dependent on the polarized bi-directional transmission function. Making the first surface high polished with an anti-reflective coating can limit unwanted scatter from the OFRF. Although only scattered light that enters the FOV and is p-polarized will raise the background level of signal on the focal plane (i.e., will contribute to noise as diffuse light), a small sun shade can be added to reduce the background to an acceptable level in order to address light that meets the criteria. The term "sun shade" as used herein will be understood to include any extended star tracker housing that effectively forms a sun shade.

Thus, in some examples, the star tracker can include a sun shade having a length less than 80% the standard length of a sun shade, as described by the above sun shade length equation. In some examples, the star trackers employing the OFRFs of the present disclosure have sun shades less than 50% the standard length of a sun shade, for example, less than 20% the standard length of a sun shade, for example, less than 10% the standard length of a sun shade. In some examples, the star trackers employing the OFRFs of the present disclosure have sun shades less than 20 centimeters in length, for example, less than 10 centimeters in length, for example, less than 5 centimeters in length. In any of these examples, such shades can also serve to partially house the OFRF. In some examples, the star trackers have no sun shades other than the housing used to contain the OFRF.

A star tracker equipped with one or more OFRFs can have an extended operational period as compared with star trackers equipped only with sun shades for out-of-field rejection. Elimination or size reduction of traditional sun shades allows stiffer systems, i.e., improved first mode at higher resonant frequencies. Provided herein are star trackers of reduced volume and mass and improved manufacturability, that can have a wider operational window. Associated methods are also provided herein.

An OFRF can include a high-efficiency converter that can convert randomly polarized light to p-polarized light. The

OFRF can then further include an angular selectivity filter capable of rejecting p-polarized light by angle of incidence. In some examples, these two elements of the OFRF can be mounted to have some angle of separation with respect to each other, e.g., 55° for a particular choice of optical materials for angular selectivity. In other examples, these two elements can be mounted to each other directly or otherwise mounted to be flush with each other, without loss of functionality, further reducing the size of the star trackers in which they are used, and further reducing the impact on first mode of the star tracker. In some examples, a small motor or other actuator can be provided to rotate the angular selectivity element so that it is pointed relative to a bright source for maximum selectivity effectiveness. In other examples that combine multiple star trackers in a single package, the result from a particular star tracker can be discounted when it is in an unfavorable position relative to a bright source.

The star trackers described herein can further include a calibrator or calibration controller and accordingly can operate to calibrate for changes in the optical properties of the star tracker's optical system as may result, for example, from thermal variations. A calibrated light source can be placed within the star tracker to make use of a property of the OFRF's angular selectivity layer, the underside surface of which is reflective to s-polarized light. When the calibrator includes an s-polarization converter, or when the calibration source otherwise produces only s-polarized light, the calibration signal light differs in polarization from the light admitted by the p-polarizing OFRF, and the two signals therefore are distinguishable. The reflective underside of the OFRF can be used to reflect the calibrated light source, i.e., in-band calibration flood source, allowing for continuous or periodic calibration without moving parts, thereby improving the ability to identify stars and monitor performance. The calibrator and associated methods simplify determination of which stars the star tracker should be seeing at any given time.

The star trackers described herein can further include an adaptive optical element (AOE) to perform wavefront correction on selected light prior to resolving on a sensor. The AOE can perform minor corrections to the image due to thermally induced distortion, mechanical creep, and reduce residual geometrical 3rd-order aberrations when a star lies near the edge of the field of view. AOE's can be or include MEMS-based deformable mirrors, photo-controlled deformable mirrors, digital micromirror devices (DMD)s, and forms of actuated deformable mirrors. The exit pupil where AOE's are to be placed constrains the required clear aperture of the AOE technology selected. The incorporation of an AOE permits the use of star-sightings to improve imaging. Star-sighting information can be used to reduce centroiding error, by adjusting the "focus" or reducing other aberrations around a star, thereby improving attitude determination. The AOE permits for stepping through multiple optical configurations, allowing the system to collect sufficient light field information to be able to dynamically adjust for nearby objects and otherwise optimize imaging. Hence, the star trackers described herein can effectively operate as light field cameras.

The star trackers described herein can further include a sensor to transduce incoming light to an electrical signal, e.g., a focal-plane array (FPA), which can comprise, for example, one or more active pixel arrays or charge-coupled devices (CCDs) to transduce light to an electrical signal. The resultant electrical signal can be processed and analyzed to determine, e.g., a position, an attitude, a quaternion, or other

useful navigational output. Such processing can be performed by a general purpose microprocessor and/or special-purpose star tracker processing circuitry, which may be located within the star tracker or elsewhere in the satellite or craft in which the star tracker is installed. As such, in the descriptions of the appended illustrations, processing circuitry is not shown or described, but processing circuitry can be part of any of the star trackers described herein. FPAs can have pixel counts in either the row or column that are simple factors of 2, e.g., 256, 512, 1,024, 2,048, 4,096, 8,192. The physical size d of the FPA in a given dimension is the product of the detector element count or pixel count c and detector element size p , also known as the pixel pitch:

$$d=cp$$

The optics of the star trackers described herein can be snap-together diamond-turned optics, which can be fabricated, for example, of low coefficient of thermal expansion (low CTE) diamond turnable material, such as beryllium or a beryllium-aluminum metal matrix composite material (e.g., ALBEMET). The AOE, calibrator, and FPA can be insertable prior to pinning. By using diamond turning, and simple incorporation of other optical elements, the star trackers of this disclosure can have improved manufacturability.

Individual star tracker devices having an OFRF may be limited in their field of view (FOV) (e.g., to an 8° FOV) due to the OFRF. However, tacking multiple light-weight star trackers in a single package can provide an ultra-wide FOV useful for precision attitude determination. Unlike with star tracker systems that must rely on bulky sun shades, the compact size of the OFRF allows multiple (e.g., 2, 3, or 4) star trackers to be packaged together in a single, compact unit with a shared optical bench. Such a unit can sample multiple boresight vectors simultaneously, enabling an improved attitude determination. The effect of this approach is similar to increasing the FOV, but has the advantage of maintaining the benefits of narrow-field high resolution imaging for star sightings.

Several different examples of star trackers are provided that each use an OFRF for stray light mitigation. Some of the examples further include adaptive optical elements and offer a useful calibration source position. Each example has a particular focal ratio. This focal ratio, along with choices of design wavelength and optical metric, determines the optimal detector size for star tracker operation. The physical size d of the chosen FPA is selected so that the FOV of the star tracker is equivalent to that necessary for angular selectivity, to selectively pass light within the FOV of the star tracker (about $\pm 4.5^\circ$). As noted above, given the physical size d of the FPA and the detector element size p , the detector pixel count c necessary for the star tracker can be determined. The detector count c multiplied by the detector element size p is equal to the required physical size d of the FPA as determined by the FOV determination. Using available FPAs with the required detector element size p allows a family of star trackers to be defined, each with a focal length f determined by focal plane availability. Given the focal ratio N and focal length f of a particular star tracker, the associated aperture size D_o required for each example can be determined.

The various example star trackers illustrated in the drawings and described herein can have different focal ratios, also known as f-numbers, and detector sizes. The focal ratios of the illustrated example star trackers can be modified to match a selected FPA size and resolution and a FOV for the star tracker. For each example, the relationship between the

FPA resolution and focal ratio can be dictated by a design function, or optical metric, as defined by the equation

$$Q=\lambda N/p$$

where A is the design wavelength, which can be chosen, for example, to correspond to the wavelength of G-type stars to be observed ($\lambda \sim 0.5$ micrometers), N is the focal ratio, also known as the f-number, of the telescope used for the star tracker, and p is the detector element size. For any particular application, the optical metric Q can be selected based on star tracker performance modeling which can be based on available focal planes and detector sizes. Choosing such a function defines the optimal pixel size for focal plane arrays for star trackers with a particular focal ratio. For example, an optical metric that provides a good compromise between sensitivity and the ability to centroid stars to establish their location is $Q=0.44$.

The OFRF serves to define the maximum operational field of view of the star tracker, which in some examples is between 4° and 8°. Selecting an existing FPA with pixels of size p defines the physical size d of such an array. The physical size d of the FPA, along with the FOV of the star tracker, defines the focal length f of the telescope, and, along with the focal ratio N , the operational aperture, also called the entrance pupil diameter, D_o of the star tracker. Physically larger FPAs will result in physically larger star trackers. Modifying the physical size d of the array, but keeping the detector element size p invariant, scales the star tracker to be larger or smaller. Selecting the FPA size d permits the adjustment of the size of the star tracker so that all useful features such as sun shutters, AOE, OFRF, and calibrators will fit within the housing that contains the star tracker. Some AOE technologies are more easily incorporated into specific telescope designs. With advances in CMOS active pixel backside illumination (BSI) technology, pixel pitches on the order of a micrometer may be available for star tracker applications.

When the FPA is constrained to a certain physical size d and the FOV for which the OFRF will operate is constrained to 8.5° or less (e.g., because of the design of the angular selectivity filter), the telescope focal length f can be determined, and thus the aperture D_o required for a particular telescope design choice can be derived based on the focal ratio N :

$$f \approx d / (2 \tan(\text{FOV}/2))$$

$$D_o \approx d / (2N \tan(\text{FOV}/2))$$

The sizes of practical components available for the construction of the star trackers disclosed herein may present sizing constraints for the star trackers. Because the size of the OFRF's random-to-p-polarization converter may in practice be limited to about 10 centimeters, the size of the telescope aperture D_o , which must be no larger, may be similarly limited. Adaptive optical mirrors with an aperture of about 5.08 centimeters, called photo-controlled deformable mirrors (PCDMs) are under development, though many adaptive optical element technologies are much smaller than this. The PCDM would require the ability to image an intensity pattern of light representing the correction to be made on the AOE, meaning that a star tracker employing a PCDM would need to be sized to accommodate the ability to illuminate the PCDM appropriately.

FIG. 1 is a system diagram of a star tracker **100** having an input **101** and an output **102**. The input **101** can include light from distant stars desired for producing the useful output **102** and may further include undesired stray light, i.e.,

out-of-field light, from one or more bright sources that should be filtered out in order to produce a useful output **102**. The output **102** can be, for example, an electrical signal representative of light resolved at a focal plane, or can be a determination based on such a signal, such as a representation of a position and/or attitude, e.g., a quaternion.

For producing the output, the star tracker **100** can include an optical system **114** that can include magnification optics **118** and a sensor **124**. The optical system **114** can be, for example, a telescope. For rejecting out-of-field light, the star tracker **100** can further include an out-of-field rejection filter (OFRF) **104** that can include an optical component **110** capable of converting randomly polarized light to p-polarized light, and a filter **112** capable of selecting for angle of incidence of p-polarized light. Component **110** can be, for example, a high efficiency random to p-polarizer converter. Filter **112** can be, for example, a multi-layer angular selectivity filter that makes use of Brewster's angle transmission. Together, these elements **110**, **112** can reject out-of-field light.

FIG. 2 is a light vector diagram showing how out-of-field light from bright source **256** is rejected by star tracker elements **200**. Star tracker elements **200** are aligned along an optical axis **202**, also called a Z-axis or boresight, passing through an X-Z plane **204** and a Y-Z plane **206**, and include random-to-p-polarization converter **210** (corresponding to element **110** of FIG. 1) and p-pass and s-rejection filter **212**, i.e., an angular selectivity layer (corresponding to element **112** of FIG. 1), which together form an out-of-field rejection filter (OFRF) (corresponding to element **104** of FIG. 1). Elements **200** further include the magnification optics **218** of the star tracker's optical system (corresponding to element **118** of FIG. 1), and a sensor **224**, which can be placed at the focal plane. Light from bright source **256** in Y-Z plane **206** outside of exclusion angle χ **252** (i.e., Greek letter chi) is largely rejected by angular rejection filter **212**. For exclusion angles specified relative to a ray at the extrema of the FOV, this angle can be, for example, on the order of 5° . The OFRF **210**, **212** can, for example, restrict light to within $\pm 4^\circ$ of the boresight. In such an arrangement, the transmitted light quickly drops to zero beyond, for example, 4.5° past the half FOV **250**. The off-axis rejection can thus be extremely large when the bright source **256** is 10° off the optical axis **202**.

FIG. 3 is a cross-sectional diagram of an example star tracker **300** having an optical system arranged as a folded Schmidt telescope having a focal ratio of f/4. The star tracker **300** illustrated can have field angles of, for example, $\pm 4^\circ$ about the boresight angle. As an example, with an array size of $2,048 \times 2,048$ 4.45-micrometer pixels, an entrance pupil diameter D_0 of 3.33 centimeters and a focal length f of 13.34 centimeters supports a FOV of 8° over an FPA size d of 0.93 centimeters.

In FIG. 3, far-angle light **304**, mid-angle light **306**, and near-angle light **308** enters from the top. The star tracker **300** is encompassed by housing **302**, which serves to hold together and protect the various optical parts. An out-of-field rejection filter (OFRF) to reject bright stray light includes random-to-p-polarization converter **310** and angular selectivity layer **312**, as discussed with respect to similarly numbered elements in FIGS. 1 and 2.

Following out-of-field rejection, incoming light is reflected off of adaptive optical element (AOE) or fixed spherical aberration corrector **314**, flat deviating mirror **316**, spherical primary mirror **318**, and is resolved on focal-plane array (FPA) **324**. Given the f/4 focal ratio N of star tracker **300**, a Q value of 0.44 can be achieved when FPA **324** has a pixel pitch p of 4.45 micrometers.

Calibrator **326** (e.g., with s-polarization filter) can be placed to generate calibration light which is then reflected off the underside of the angular selectivity layer **312** into the optical path. The calibrator can be a flood source or can have a more elaborate optical system to create a point source in the focal plane. As examples, calibrator **326** can consist of an array of light-emitting diodes (LEDs), or a lamp. In any case, the calibrator ensures that the radiometric response of the focal plane is known. Simple diamond-turned optics can be used for primary mirror **218** and deviating mirror **316**. The illustrated star tracker **300** can perform well with a bright source outside 15° of the optical axis.

The ability to eliminate or substantially reduce the size of sun shades permits multiple star trackers to be packaged together in a compact form for greater FOV. FIGS. 4A and 4B are overhead cross-sections of a package arrangement **400** of three star trackers of the type shown in FIG. 3 to create, effectively, a three-axis star tracker **400**. Although the sections of FIGS. 4A and 4B show the same view, the sections are separated into two illustrations for clarity. FIG. 4A shows a section at an upper level while FIG. 4B shows a section at a lower level beneath the upper level section of FIG. 4A. Both sections show package housing **402** having a base, primary mirrors **418a**, **418b**, **418c**, and FPAs **424a**, **424b**, **424c**. FIG. 4A shows OFRF random-to-p-polarization converters **410a**, **410b**, **410c**. FIG. 4B shows OFRF angular selectivity layers **412a**, **412b**, **412c**, as well as AOE or fixed spherical aberration correctors **414a**, **414b**, **414c**, and deviating mirrors **416a**, **416b**, **416c**.

The boresights of the three star trackers can be arranged such that the star trackers have substantially non-overlapping fields of view. By "substantially non-overlapping," it is meant that one star tracker in the package **400** shares no more than 33% of the FOV of any other star tracker in the package **400**. As additional examples, package **400** can be arranged such that no star tracker in the package **400** shares no more than 20% of the FOV of any other star tracker in the package **400**, or such that no star tracker in the package **400** shares no more than 10% of the FOV of any other star tracker in the package **400**. In the package arrangement **400** illustrated, the azimuth difference is 120° between trackers with elevations ranging from $\pm 4.5^\circ$ about a 55° angle relative to the base. Because the light transmission paths can share space, the package **400** can take up less volume than would be taken by three star trackers packaged individually.

FIG. 5 is a cross-sectional diagram of an example star tracker **500**, similar to the star tracker **300** of FIG. 3, but additionally including sun shutters **532**, **534**, **536** and sun-sensor photodiodes **538**, **540** for enhanced FPA protection. As with the previously described design, housing **502** holds together the various parts, including AOE or fixed spherical aberration corrector **514**, deviating mirror **516**, primary mirror **518**, and calibrator **526**. A first sun shutter **532** can be mounted to random-to-p-polarization converter **510**. A second sun shutter **534** can be mounted to angular selectivity layer **512**. A third sun shutter **536** can be mounted in front of FPA **524**. Each sun shutter **532**, **534**, **536** can be of the mechanical variety, such as a two-position linear filter change device, a mechanical iris, or a guillotine cover that obscures the clear aperture when engaged. After p-polarization, e.g., at position **534**, an s-polarized filter can effectively block light into the star tracker **500**. Other sun shutter types may include liquid crystal and electro-chromic devices with electronically controlled transparency. Mechanical shutters have an advantage in that they do not add attenuation to the optical device.

Sun-sensor photodiodes **538**, **540** can be used to trigger shutters **532**, **534**, **536** to protect FPA **524** when the sun is within the FOV of the star tracker **300**. Alternatively or additionally to the use of photodiodes, the shutters can be triggered based on a light intensities sensed at the FPA **524**. Additionally or alternatively to the shutters, AOE **514** can be configured to defocus direct sunlight, thereby prevented focused sunlight from striking FPA **524** and protecting FPA **524** from damage. Certain focal plane technologies are not as susceptible to damage by the sun or other bright sources, and hence could operate without the complexity of a sun shutter.

In the examples illustrated in FIGS. **3** and **5**, there is some amount of angular separation (e.g., 55°) between the OFRF elements (**310/312** in FIGS. **3** and **510/512** in FIG. **5**). FIG. **6** is a cross-sectional diagram of an example star tracker **600**, similar to the star trackers **300** and **500** of FIGS. **3** and **5**, but with the OFRF elements, i.e., random-to-p-polarization converter **610** and angular selectivity layer **612**, mounted flush with each other, further reducing the overall volume of the star tracker. As in the previously described examples, star tracker **600** can include housing **602**, AOE or fixed spherical aberration corrector **614**, deviating mirror **616**, primary mirror **618**, FPA **624**, calibrator **626**, sun shutters **632**, **632**, **636**, and/or sun-sensor photodiodes **638**, **640**.

FIG. **7** is a cross-sectional diagram of another example star tracker **700**, in which the optical components are arranged as a three-mirror telescope, e.g., in the fashion of a Korsch $f/6$ telescope. Given a star tracker design function of $Q=0.44$ and a design wavelength of 0.5 micrometers, the detector element size p for the FPA **724** of star tracker **700** can be, for example, 6.82 micrometers. As an example, choosing FPA **724** to comprise a $2,048 \times 2,048$ pixel array and restricting the FOV to 8° over a 1.4 -centimeter physical size d of FPA **724**, star tracker **700** can have a focal length f of 10 centimeters and an aperture of 1.67 centimeters. Polarization converter **710** must be at least as large as the aperture D_0 . The length of the angular selectivity filter **712** can be about 2.72 centimeters in the configuration shown in FIG. **7** with the aforementioned focal plane sizing choice. For the dimensions described, the AOE **714** can be about 1.5 centimeters in size. The design of star tracker **700** thus allows significant room to support AOE ancillary equipment required for control of AOE **714**. AOE **714** allows performance beyond the nominal 6° FOV supported by this optical design.

Housing **702** acts as an optical bench holding together the various components. Far angle light **704**, mid-angle light **706**, and near-angle light **708** enter from above and pass through OFRF random-to-p-polarization converter **710** and OFRF angular selectivity layer **712**. Together, these OFRF elements mitigate stray light and eliminate or greatly reduce the need for a bulky sun shade while still providing a large operational window for star tracker **700**. Light can reflect off primary mirror **718**, secondary mirror **720**, tertiary mirror **722**, and AOE or fixed spherical aberration corrector **714** before resolving on FPA **724**. Calibrator **726** can be placed as shown to receive light reflected from the underside of angular selectivity layer **712**. One or more pins **728** can fasten mirrors **718**, **720**, **722** to housing **702**. Additional structure (not shown) can emanate from the structure of mirror **720** to support AOE or fixed spherical aberration corrector **714** and FPA **724** such that the optical elements come together appropriately when pinned by pin(s) **728**. Although not shown for the sake of simplicity, the star tracker **700** of FIG. **7** could be outfitted with sun shutters and

sun-sensor photodiodes to further protect FPA **724** from direct sunlight, as described above and as illustrated in FIGS. **5** and **6**.

FIG. **8** is a cross-sectional diagram of a star tracker **800** with an optical arrangement similar to that of star tracker **700** shown in FIG. **7**, but with FPA **824** arranged to receive light directly from tertiary mirror **822** (i.e., without an AOE or fixed spherical aberration corrector). Without an AOE to adjust the image at larger field angles, star tracker **800** supports a smaller FOV of, for example, 6° relative to star tracker **700**. As an example, choosing FPA **824** to have a $2,048 \times 2,048$ pixel array with 6.82 -micrometer pixel pitch p and restricting the FOV to 6° over a 1.4 -centimeter physical size d of FPA **824** results in a star tracker with a focal length f of 13.32 centimeters, and aperture D_0 of 2.22 centimeters. The polarization converter **810** must be at least as large as the aperture D_0 . The length of the angular selectivity filter **812** (i.e., the distance in the vertical dimension of FIG. **8**) is about 2.71 centimeters in the configuration shown in FIG. **8** with this focal plane sizing choice. More generally, the required length L of the angular selectivity filter **812** is $L = D \sin(\pi/2 - \beta)$, where D is the diameter of the angular selectivity filter **812** and β is the effective Brewster's angle of the angular selectivity filter **812**.

Far angle light **804**, mid-angle light **806**, and near-angle light **808** enter from the top. Housing **802** holds together OFRF random-to-p-polarization converter **810**, OFRF angular selectivity layer **812**, primary mirror **818**, secondary mirror **820**, tertiary mirror **822**, FPA **824**, and calibrator **826**. Pins **828** can fasten mirrors **818**, **820**, **822** to housing **802**. Additional structure (not shown) can emanate from the structure of mirror **820** to support FPA **824** such that the optical elements come together appropriately when pinned by pin(s) **828**. Again, sun shutters and sun-sensor photodiodes have been omitted from illustration in this example, but could be included.

FIG. **9** is a cross-sectional diagram of another example star tracker **900**, in which the optical components are arranged to have a form of solid catadioptric arrangement. The design of star tracker **900** allows a compact optical design when the index of the two refractive elements and mirror curvature are chosen to minimize physical length relative to aperture. The illustrated arrangement can have, for example, a focal ratio N of $f/2.18$. A solid catadioptric optical bench support structure is not indicated on this diagram, but could be similar to that depicted in FIG. **10**.

As an example, given a star tracker design function of 0.44 and a design wavelength of 0.5 micrometers, detector element size p for star tracker **902** can be chosen to be 2.48 micrometers. Choosing a $2,048 \times 2,048$ array and restricting the FOV to 8° over a 0.51 -centimeter physical size d of FPA **924** results in a star tracker with a focal length f of 3.63 centimeters, and an aperture D_0 of 1.672 centimeters. Star tracker **900** can also be scaled by selecting either a larger or smaller physical focal plane, while maintaining a 2.48 -micrometer pixel pitch p to meet the star tracker design goals outlined previously. Larger pixel count FPAs will have smaller instantaneous field-of-view (IFOV) values, longer focal lengths, and larger aperture sizes.

Housing **902**, which, as with other examples described herein, can be a snap-together housing, holds together components including OFRF random-to-p-polarization converter **910**, OFRF angular selectivity layer **912**, and a single refractive element **970** that is annularly coated to form a primary mirror **918**. AOE or fixed spherical aberration corrector **914** can be mounted to refractive element **970** and act as a secondary mirror to focus light on FPA **924**.

11

Calibrator **926** can be placed as shown to receive light reflected from the underside of angular selectivity layer **912**. Although not shown for the sake of simplicity, star tracker **900** could be outfitted with sun shutters and sun-sensor photodiodes to further protect FPA **924** from direct sunlight as described above and as illustrated in FIGS. **5** and **6**.

FIG. **10** is a cross-sectional diagram of another example star tracker **1000**, similar to star tracker **900** shown in FIG. **9**, but with polarization converter **1010** designed to operate efficiently at the same orientation angle as angular selectivity filter **1012**, such that the OFRF elements, i.e., random-to-p-polarization converter **1010** and angular selectivity layer **1012**, can be mounted essentially flush with each other, further reducing the overall volume of the star tracker. As in the previously described example, star tracker **1000** can include housing **1002**, refractive element **1070** annularly coated to form primary mirror **1018**, AOE or fixed spherical aberration corrector **1014**, FPA **1024**, calibrator **1026**, sun shutters (not shown), and/or sun-sensor photodiodes (not shown). Refractive element **1070** can be held in place by solid catadioptric optical bench support structure **1080**, while AOE **1014** can be mounted to refractive element **1070**. The design of star tracker **1000** is a slightly faster design than that of star tracker **900**, and supports smaller pixels of, for example, 1.95 micrometers.

Star tracker **1000** can have a focal ratio N of, for example, $f/1.7$. As an example, given a star tracker design function of 0.44 and a design wavelength of 0.5 micrometers, detector element size p for star tracker **1000** can be chosen to be 1.95 micrometers. Choosing a $2,048 \times 2,048$ array and restricting the FOV to 8° over a 0.4-centimeter physical size d FPA **1024** results in a star tracker with a focal length f of 2.86 centimeters, and an aperture D_0 of 1.66 centimeters. Star tracker **1000** can also be scaled by selecting either a larger or smaller physical focal plane, while maintaining the 1.95-micrometer pixel pitch p to meet the star tracker design goals outlined previously. Larger pixel count FPAs will have smaller IFOV values, longer focal lengths, and larger aperture sizes.

FIG. **11** is a cross-sectional diagram of another example star tracker **1100**, in which the optical components are arranged in a Cassegrain reflector configuration, i.e., having a combination of a primary concave mirror **1118** and a secondary convex mirror **1120**. The illustrated arrangement can have, for example, a focal ratio N of about $f/4.42$ and therefore an optimal pixel size p of about 5 micrometers. Cassegrain telescopes are very narrow field, and even with an AOE to extend the performance of the FOV, the design of star tracker **1100** is likely to support only a 1° FOV. With a 720×640 pixel-count FPA, for example, the focal length f of star tracker **1100** can be 20.7 centimeters and star tracker **1100** can have an aperture of 4.68 centimeters.

Housing **1102** holds together components including OFRF random-to-p-polarization converter **1110**, OFRF angular selectivity layer **1112**, and calibrator **1126**, which can be placed as shown to receive light reflected from the underside of angular selectivity layer **1112**. Housing **1102** can also hold solid catadioptric optical bench support structure **1180**, which in turn can hold FPA **1124**, primary mirror **1118**, and spider **1182** to support secondary mirror **1120** and AOE or fixed spherical aberration corrector **1114**. Although not shown for the sake of simplicity, the star tracker **1100** of FIG. **11** could be outfitted with sun shutters and sun-sensor photodiodes to further protect FPA **1124** from direct sunlight as described above and as illustrated in FIGS. **5** and **6**.

FIG. **12** is a cross-sectional diagram of another example star tracker **1200**, similar to star tracker **1100** shown in FIG.

12

11, but with the polarization converter **1210** designed to operate at the optimal tilt angle for angular selectivity filter **1212**, such that OFRF elements, i.e., random-to-p-polarization converter **1210** and angular selectivity layer **1212**, can be mounted essentially flush with each other, further reducing the overall volume of the star tracker. As in the previously described example, star tracker **1200** can include housing **1202**, primary mirror **1218**, secondary mirror **1220**, AOE or fixed spherical aberration corrector **1214**, FPA **1224**, calibrator **1226**, solid catadioptric optical bench support structure **1280**, spider **1282**, sun shutters (not shown), and/or sun-sensor photodiodes (not shown).

FIGS. **13A** and **13B** are cross-sectional diagrams showing different views of another example star tracker **1300**, which is a three-mirror flat and wide field telescope. FIG. **13A** shows a side view while FIG. **13B** shows a view from above. The illustrated arrangement can have, for example, a focal ratio N of about $f/1$ and therefore an optimal pixel size p for a star-tracking mission of a little over 1 micrometer. Housing **1302** holds together components including OFRF random-to-p-polarization converter **1310**, OFRF angular selectivity layer **1312**, primary mirror **1318**, secondary mirror **1320**, AOE or fixed spherical aberration corrector **1314** (acting as a fold mirror), tertiary mirror **1322**, and FPA **1324**. To fully exploit the FOV of star tracker **1300**, the angular selectivity filter **1312** and random-to-p-polarizer **1310** can be designed to operate over a wider field of view, e.g., $\pm 6^\circ$.

Calibrator **1326** can be placed as shown to receive light reflected from the underside of angular selectivity layer **1312**. Additionally or alternatively, a calibration source can be placed at the position indicated by reference numeral **1314**. Although not shown for the sake of simplicity, the star tracker **1300** of FIGS. **13A** and **13B** can be outfitted with sun shutters and sun-sensor photodiodes to further protect FPA **1324** from direct sunlight as described above and as illustrated in FIGS. **5** and **6**.

FIGS. **14A** and **14B** are cross-sectional diagrams showing different views of another example star tracker **1400**, similar to the star tracker **1300** shown in FIGS. **13A** and **13B**, except with the calibrator eliminated to provide an even more compact star tracker. As in the previous example, housing **1402** holds together components including OFRF random-to-p-polarization converter **1410**, OFRF angular selectivity layer **1412**, primary mirror **1418**, secondary mirror **1420**, AOE or fixed spherical aberration corrector **1414** (acting as a fold mirror), tertiary mirror **1422**, and FPA **1424**. Although not shown for the sake of simplicity, the star tracker **1400** of FIGS. **14A** and **14B** could be outfitted with sun shutters and sun-sensor photodiodes to further protect FPA **1424** from direct sunlight as described above and as illustrated in FIGS. **5** and **6**. The surplus volume of housing **1402** on the left side of each diagram can be eliminated, or can be retained to permit individual star trackers **1400** to be easily tacked, as shown in FIG. **15A**.

FIG. **15A** is a top view section of a package arrangement **1500** of four star trackers to create, effectively, a four-axis star tracker **1500**. The package arrangement **1500** is illustrated using trackers like those shown in FIGS. **13A**, **13B**, **14A**, **14B**, but could be used for any of the trackers disclosed herein. Accordingly, certain details in the placement of the optics have been omitted. All of the trackers can be manufactured to be packaged in a single housing or multiple housings **1502a**, **1502b**, **1502c**, **1502d** can be tacked together. The housing or housings contain or respectively contain OFRF random-to-p-polarization converters **1510a**, **1510b**, **1510c**, **1510d**, OFRF angular selectivity layers **1512a**, **1512b**, **1512c**, **1512d**, AOE or fixed spherical aber-

ration correctors **1514a**, **1514b**, **1514c**, **1514d**, FPAs **1524a**, **1524b**, **1524c**, **1524d**, mirrors **1518a**, **1518b**, **1518c**, **1518d**, calibrators (not shown), shutters (not shown), and sun sensor photodiodes (not shown). When four individual housings are tacked, pins can be placed at pin positions (e.g., **1590**) on lines of symmetry between the four star trackers. The bottom view (shown in phantom) has the mirror-image configuration of the top view (not shown in FIG. **15A**), such that a staircase configuration at the interface between housings can be used to pin the housings together, as shown in FIG. **15B**. FIG. **15B** shows a side-view cross section of the interface with a pin **1590a** connecting housings **1502a** and **1502b**. The illustrated example using pins at a staircase configuration interface is but one manner of tacking multiple housings, but multiple housings can be tacked in other configurations as well, or using adhesive, for example.

In the package arrangement **1500** illustrated in FIG. **15A**, the azimuth difference is 90° between trackers with elevations ranging from $\pm 4.5^\circ$ about the boresight angle, depending upon the optical arrangement used. In the arrangements **1300** and **1400** shown in FIGS. **13A**, **13B**, **14A**, **14B**, for example, the boresight is at a 55° angle relative to the base, whereas with the arrangements **700**, **800**, **900**, **1000**, **1100**, and **1200** shown in FIGS. **7-12**, the boresight is 0° relative to the base, in which case the individual trackers must be cantled by the optical bench mount to provide the appropriate separation of FOV of the individual trackers in the package **1500**.

Any of the various star tracker designs described above may be selected to meet the mission requirements of the star tracker. The various star tracker designs described above may also be modified to have varying focal ratios and other design parameters. Some surfaces that appear flat as illustrated might also be curved (e.g., aspheric).

FIG. **16** is a flow chart depicting a method **1600** of star tracking to determine attitudes and/or rates based on star imagery collected from a star tracker having features described above. Starfield light can be admitted to the star tracker, and when a bright source, such as the Sun, is in the star tracker's field of view, a shutter can reject **1602** bright in-field light. In order to lessen stray light from a bright source not directly in the field of view, an out-of-field rejection filter can reject **1604** out-of-field light. Simultaneously or periodically, a calibrator can provide **1606** a calibrated light source to perform a relative calibration, the light from which can be reflected **1608** into the field of view, e.g., by reflecting off the underside of the out-of-field rejection filter. The rejection filter can reflect s-polarized light into the field of view of the tracker. This calibration light can be used to perform **1622** focal plane radiometric calibration. The star tracker may also view stars for with known flux, which can be used for absolute calibration. Dark noise calibration **1616** can be achieved either by closing a shutter (if so equipped) or by taking focal plane samples while the tracker is viewing an area of space with stars below the minimum detectable magnitude of the tracker, with bright sources well outside the exclusion angle of the OFRF.

The star tracker optics can apply **1610** optical gain to the incident star light and an exit pupil can be formed **1612**. When an adaptive optical element is present near the exit pupil, it can be used to apply **1614** preliminary wavefront correction to improve the image to the diffraction limit. Stars near the edge of the field may suffer from geometric aberrations that can be corrected by manipulating the surface of the AOE based on Zernike polynomials and the assumption that stars should look like point sources on the focal plane array.

A focal plane array can retrieve **1616** an un-calibrated image. A microprocessor or other processing circuitry can identify **1616** star-free calibration data and update **1620** calibration data based on the identified data. The processor or circuitry can then perform **1622** focal plane calibration on the un-calibrated image to derive a calibrated image containing a number of targets (e.g., stars), which can be analyzed to sort **1624** likely target sightings by selection criteria. The processor or circuitry can further perform **1626** fuzzy target matching to assess the 3D orientation of the star tracker, and, accordingly, that of the satellite or craft to which the star tracker is fixedly mounted.

If the match is a good match, collected matched targets **1632** and an input previous or coarse attitude **1630** can be used to determine **1634** (and report) a new attitude and rate, which can be output to telemetry or to further processing. Rejected targets can also be collected **1636** and non-target sources can be dumped **1638** to additional processing. This successfully ends the method, which can restart. However, if the match is poor, star locations can be improved **1628** on the assumption that blurry objects at locations expected via the coarse attitude knowledge are stars with large amounts of third-order aberration. A series of AOE mirror deformations based, for example, on Zernike polynomials can be applied in star tracker designs with AOE to reduce geometrical aberrations below the diffraction limit. The preliminary wave front correction **1614** can be based on a third-order aberration model for the position of the star in the FOV. Certain aberrations can be expected to grow quadratically, for example, with positions relative to the optical center of the star tracker array. The point response function can be monitored as various AOE configurations are attempted, until a match is close enough to the expectation for the diffraction-limited point response function. These configurations can be determined during integration and test, and stored for later use, e.g., while the star tracker is in orbit. Additional corrections near the expected preliminary correction can be attempted to remove the effects of thermal distortions that might corrupt the reported star positions used for attitude determination.

FIG. **17** is a flow chart depicting a method **1700** of star tracking that focuses particularly on the rejection of out-of-field light (e.g., in **1604** of FIG. **16**). In method **1700**, light can be admitted **1702** to a star tracker. To provide out-of-field rejection, incoming randomly polarized light can be converted **1704** to p-polarized light and the p-polarized light can be angularly selected **1706**. Thus, out-of-field light can be rejected. The remaining selected (in-field) light can be resolved **1708** on a focal plane array and attitude of the star tracker can be determined **1710** based on the resolved light. Scattered light can occur in the polarization filter **1704**. This light has two components, s-polarized light and p-polarized light. This light can scatter in a direction that is in the field of view of the telescope. The scattered p-polarized light will pass the angular selectivity, while scattered s-polarized light will be reflected. Light that is scattered into the FOV from the polarization conversion **1704** with an unfortunate p-polarization (i.e., light that will end up as background) can increase the background level on the focal plane, reducing the signal-to-noise ratio.

The weight of the star trackers described herein can be less than about 10 pounds per star tracker. Elimination of sun shades can result in a weight savings of about 9 pounds per star tracker, i.e., about 27 pounds for a three-tracker package.

15

Unless specified otherwise, as used in this disclosure, “about” is used to signify a tolerance of plus or minus five percent, and “based on” means “based at least in part on.”

What have been described above are examples of the present invention. It is, of course, not possible to describe every conceivable combination of components or methodologies for purposes of describing the present invention, but one of ordinary skill in the art will recognize that many further combinations and permutations of the present invention are possible. Accordingly, the present invention is intended to embrace all such alterations, modifications and variations that fall within the spirit and scope of the appended claims.

The invention claimed is:

1. A star tracker comprising:
 - an out-of-field rejection filter comprising:
 - a converter to convert randomly polarized light to p-polarized light; and
 - an angular selectivity layer to select in-field p-polarized light and reject out-of-field p-polarized light;
 - telescopic optics; and
 - a focal plane array to resolve the selected light.
2. The star tracker of claim 1, further comprising an adaptive optical element (AOE) arranged to reduce centroiding error by adjusting focus of, or reducing aberrations in, selected light.
3. The star tracker of claim 1, wherein an interior side of the angular selectivity layer is reflective to s-polarized light and is arranged to reflect light from a calibration source within the star tracker to be resolved on the focal plane array.
4. The star tracker of claim 1, wherein at least a portion of the telescopic optics are diamond-turned optics.
5. The star tracker of claim 1, wherein the star tracker does not comprise, and is not coupled to, a sun shade.
6. The star tracker of claim 1, wherein the star tracker does not comprise, and is not coupled to, a sun shade longer than twenty centimeters.
7. The star tracker of claim 1, wherein the focal plane array is an active pixel array.
8. The star tracker of claim 1, wherein the converter and the angular selectivity layer are arranged at an angle of about 55° with respect to each other.
9. The star tracker of claim 1, wherein the angular selectivity layer are arranged to be flush with each other.
10. A multi-axis star tracker package comprising:
 - a base;
 - at least three star trackers mounted to the base, each having a boresight, each star tracker comprising:
 - an out-of-field rejection filter comprising:
 - a converter to convert randomly polarized light to p-polarized light; and
 - an angular selectivity layer to select in-field p-polarized light and reject out-of-field p-polarized light;
 - telescopic optics; and
 - a focal plane array to resolve the selected light;

16

wherein the boresights of the star trackers are arranged such that the star trackers have substantially non-overlapping fields of view.

11. The multi-axis star tracker package of claim 10, wherein the package comprises exactly three star trackers arranged to have an azimuth difference of about 120° between each star tracker.
12. The multi-axis star tracker package of claim 11, wherein each star tracker has a field of view of $\pm 4.5^\circ$ about a 55° angle relative to the base.
13. The multi-axis star tracker package of claim 10, wherein the package comprises exactly four star trackers arranged to have an azimuth difference of about 90° between each star tracker.
14. The multi-axis star tracker package of claim 10, wherein the package does not comprise any sun shade having a length greater than ten centimeters.
15. The multi-axis star tracker package of claim 10, wherein an interior side of an angular selectivity layer of at least one of the star trackers is reflective to s-polarized light and is arranged to reflect light from a calibration source within the star tracker to be resolved on the focal plane array.
16. A method of star tracking comprising:
 - admitting light to a star tracker having an attitude;
 - converting randomly polarized light in the admitted light to p-polarized light;
 - angularly selecting the p-polarized light to reject out-of-field light;
 - resolving the selected light on a focal plane array; and
 - determining the attitude of the star tracker based on the resolved light.
17. The method of claim 16, further comprising:
 - sensing that the Sun is in the field of view of the star tracker; and
 - based on the sensing, activating at least one sun shutter in the star tracker to protect the focal plane array from damage.
18. The method of claim 16, further comprising:
 - sensing that the Sun is in the field of view of the star tracker; and
 - based on the sensing, adapting at least one adaptive optical element (AOE) in the star tracker to defocus direct sunlight to protect the focal plane array from damage.
19. The method of claim 16, further comprising reflecting calibration light off of an interior side of a filter used to angularly select the p-polarized light, the calibration light being resolved on the focal plane array.
20. The method of claim 19, wherein the selected light imaged on the focal plane array forms an uncalibrated image, the method further comprising performing focal plane calibration based on the calibration light illuminated on the focal plane array to derive a calibrated image from the uncalibrated image.

* * * * *