



US00D842057S

(12) **United States Design Patent**
Macor

(10) **Patent No.:** **US D842,057 S**

(45) **Date of Patent:** **** Mar. 5, 2019**

(54) **DOUBLE-ENDED BOX WRENCH**

D737,641 S * 9/2015 Macor D8/21
D737,642 S * 9/2015 Macor D8/21

(71) Applicant: **Richard J. Macor**, Easton, PA (US)

* cited by examiner

(72) Inventor: **Richard J. Macor**, Easton, PA (US)

Primary Examiner — Randall H Gholson

(73) Assignee: **Proprietary Technologies, Inc.**

(**) Term: **15 Years**

(57) **CLAIM**

The ornamental design for a double-ended box wrench, as shown and described.

(21) Appl. No.: **29/651,291**

(22) Filed: **Mar. 27, 2018**

(51) **LOC (11) Cl.** **08-05**

(52) **U.S. Cl.**
USPC **D8/21; D8/27; D8/28**

(58) **Field of Classification Search**
USPC D8/25, 60, 97, 107, 21, 82-87, 308, 307;
81/177.1, 177.85, 121.1, 124.3, 165-170,
81/110.1, 176.2, 124.6, 176.1, 176.15;
16/110.1
CPC B25B 1/00; B25B 7/00; B25B 9/00; B25B
13/00

See application file for complete search history.

DESCRIPTION

This patent application may relate to one or more of the following patents granted to the inventor herein: U.S. Pat. Nos. D737,642; D737,641; D718,104; D701,439; D701,438; D701,437; D681,409; D604,130; 7,047,845; 6,959,628; D494,833; 6,792,833; 6,655,239; D481,613.

FIG. 1 is a front elevation view of a double-ended box wrench showing my new design;
FIG. 2 is a rear elevation view thereof;
FIG. 3 is a top plan view thereof;
FIG. 4 is a bottom plan view thereof;
FIG. 5 is a right side elevation view thereof; and,
FIG. 6 is a left side elevation view thereof.

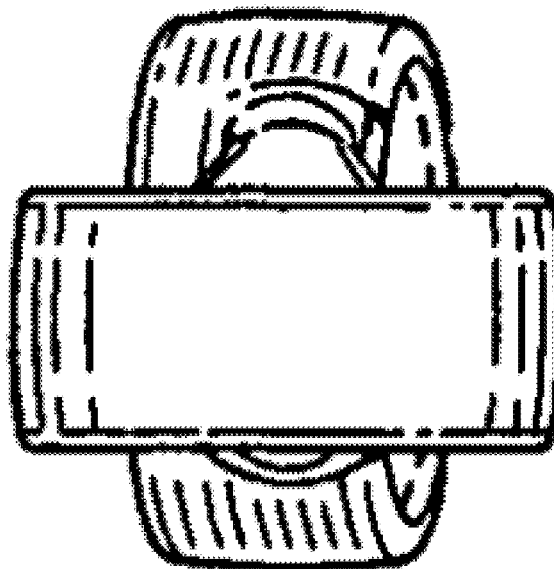
The broken line disclosure of the double-ended box wrench shown in FIGS. 1-6 define the boundaries of the claimed subject matter, but form no part of it.

(56) **References Cited**

U.S. PATENT DOCUMENTS

D622,799 S * 8/2010 Cameron A63B 59/50
D21/794
D718,104 S * 11/2014 Macor D8/21

1 Claim, 1 Drawing Sheet



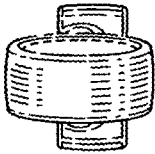


FIG. 1

FIG. 2

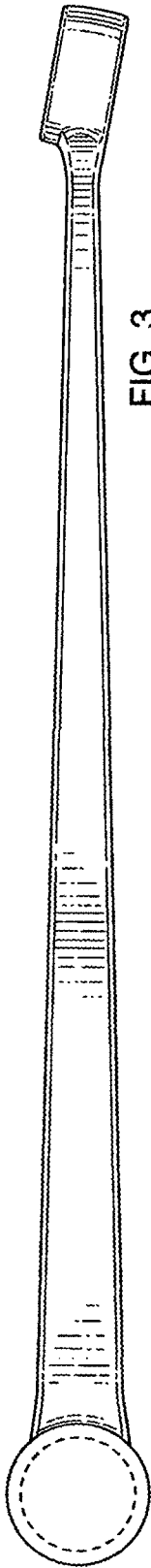


FIG. 3

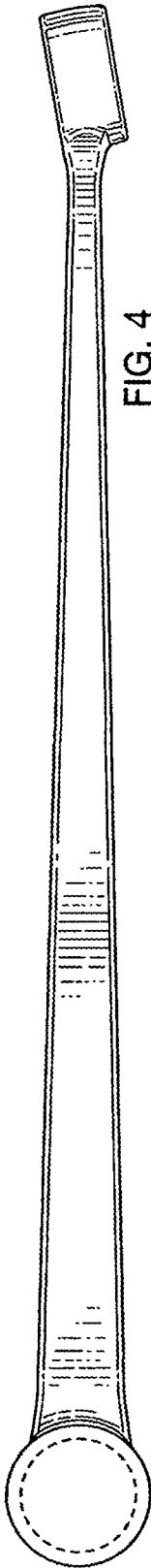


FIG. 4

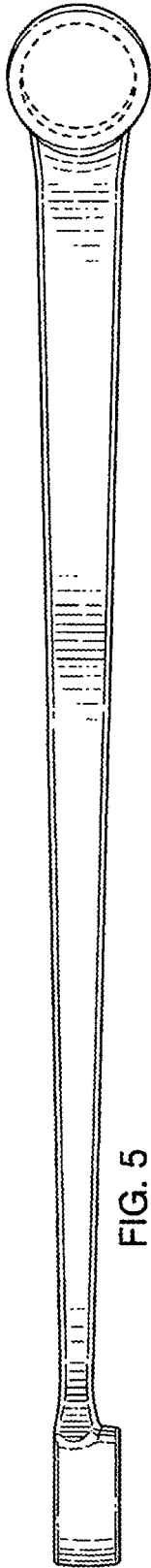


FIG. 5

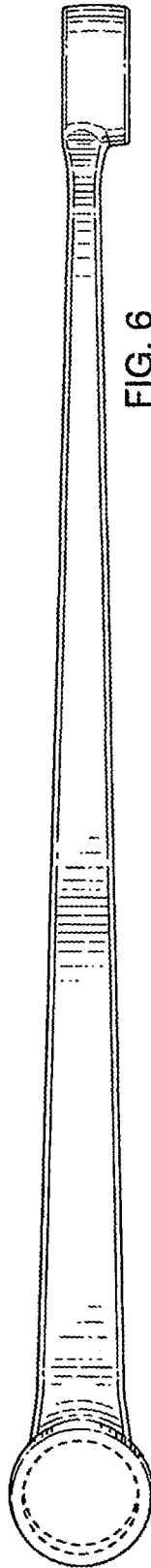


FIG. 6